



OLD YELLOWSTONE TRLS

Approximate Yellowstone National Park Boundary

STONE ST

FOURTH ST S

THIRD ST S

MAIN ST

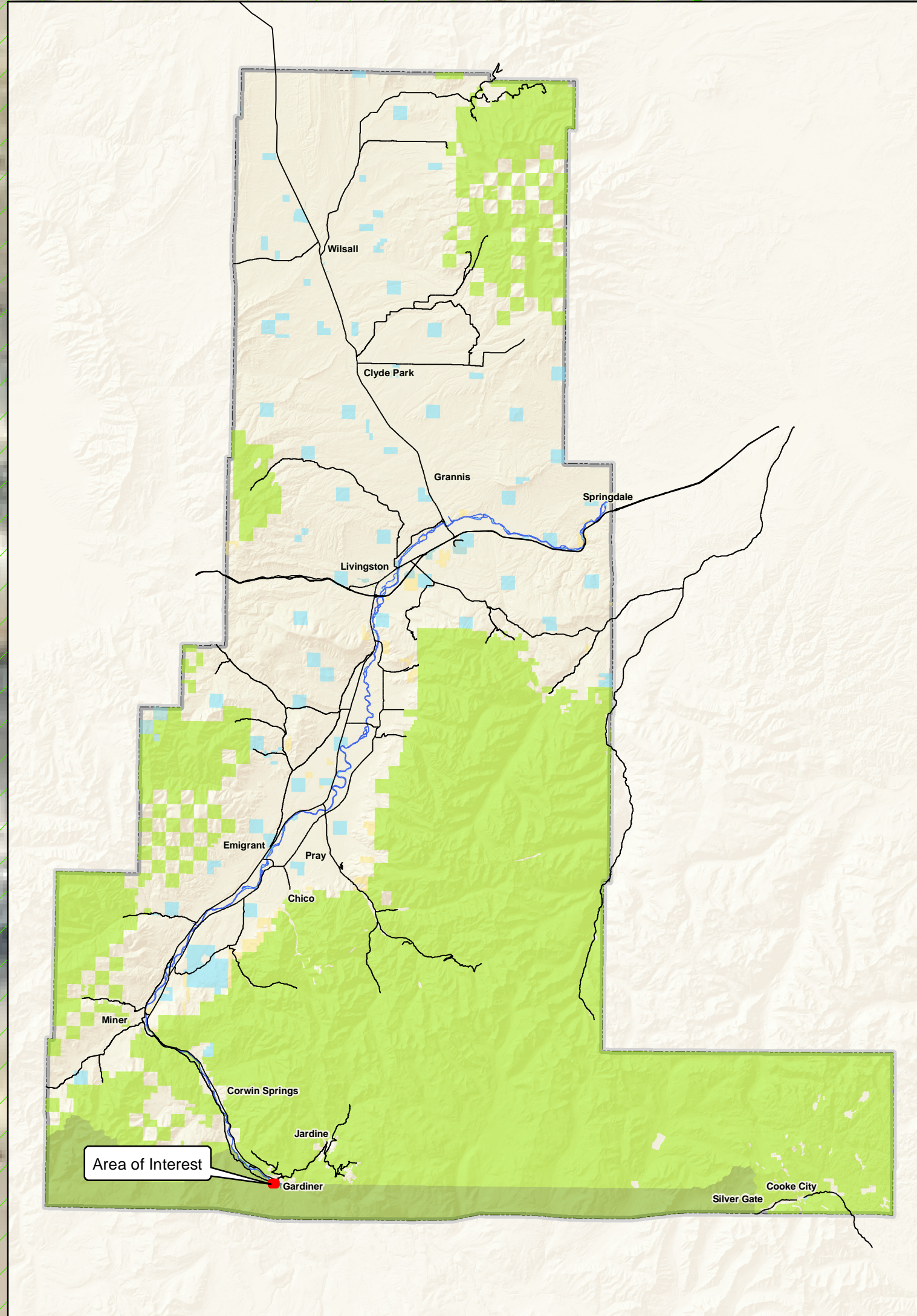
PARK ST

NORTH ST

Legal Description:
GARDINER ORIGINAL TOWNSITE,
S23,
T09 S,
R08 E,
ACRES 0.908,
V33-268 TRACT LESS ALLEY IN S2 (REFERENCE COS 1935)

Calculated Acreage: 0.860165

Coordinates: 45.03N,
-110.71E



Arch Park Gardiner, Montana



This map is for informational purposes only and not for legal, engineering, or surveying purposes. Park County assumes no legal responsibility for this information and shall not be liable for any claims or damages arising out of the use of this information. Date: 3/16/18 Author: SIAV

