

PARK COUNTY COMMISSIONERS

414 E. Callender, Livingston, MT 59047 • Ph. 406-222-4106, Fax 406-222-4160
www.parkcounty.org • Email: commissioners@parkcounty.org

June 28, 2012

Park County Refuse District Members :

The Park County Commission has thoroughly reviewed the recommendations submitted by Bell and Associates. In addition, the Commission has held many public meetings throughout the County to receive the input of the public on the future of waste management disposal for Park County Citizens.

It is the recommendation of the Park County Commission that it is in the best interest of Park County to use the City of Livingston transfer station for disposal of household solid waste, convert the landfill to a pay per ton disposal system, and increase the recycling effort in Park County to reduce the amount of refuse in the waste stream.

Park County will be doing a final test to determine if there are any issues with the City being able to accepting refuse from the County. Pending a successful test at the City, it is the intention of the Commission to direct the County Attorney's Office to complete a contract with the City of Livingston and end the Envirocon contract.

Randy Taylor R.S.
County Commissioner

Marty Malone
County Commissioner

ABSENT

James Durgan
County Commissioner

JUN 28 2012

**Consideration of Solid Waste Disposal Options
for Park County, MT
June 2012**



JUN 28 2012

BACKGROUND

In 1981, the Park County Landfill was closed to blowable solid waste due to a court order.¹ A settlement was reached, allowing the landfill to accept "...brick, dirt, rock, concrete, wood material, brush, lumber, vehicle tires, inert industrial wastes and other non-water soluble inert solids..." To handle the disposal of municipal solid waste, the county built an incinerator to dispose of wastes that could not go to the landfill. The incineration facility was operated from 1982 until 1996 when the Montana Department of Environmental Quality (DEQ) cited Park County for air quality violations². In 1996 the Montana Department of Environmental Quality (DEQ) cited Park County for air quality violations³. Due to a combination of inadequate maintenance and tightened environmental standards the incinerator facility was not meeting emissions standards. Park County Commissioners decided it was infeasible and impractical to repair and upgrade the incinerator and the facility was closed in 2005.

The former incinerator facility was converted into a transfer station. Livingston collected the solid waste inside its boundaries. The County established 'greenbox' sites at various locations around the county. Figure 1 shows current green box sites. Solid waste was transported to the transfer station and then compacted into shipping containers called bottles. The County signed a contract with Envirocon to transport all Class II and Class IV solid waste.⁴ Envirocon delivers the bottles to Valley View Landfill in Lewis & Clark County, Montana. The County continues in contract⁵ with Envirocon to the present time.

The Park County Concerned Citizens (PCCC) objected to the closing of the incinerator by the commission without putting the issue to a vote of Park County citizens. PCCC filed suit against Park County⁶. An agreement was reached in 2004 calling for a study of the long and short term plans for solid waste disposal. Zia Engineering and Environmental Consultants (Zia) was hired to conduct the study and write a

¹ Sundling v. Park County

² \$10,000 in fines plus legal costs.

³ \$10,000 in fines plus legal costs.

⁴ ARM 17.50.503 defines Class II and Class IV solid wastes, in accordance with the Montana Solid Waste Management Act 75-10-201 through 75-10-233 MCA.

⁵ Contract terms--5 yrs. Can be ended with 60-day notice at any time.

⁶ Park County Concerned Citizens v. Park County .

comprehensive Master Plan for solid waste disposal for Park County and the City of Livingston. The Zia report⁷ was issued in September 2006.

PCCC did not feel the Zia report satisfied the terms of the agreement, and the court issued an injunction in 2007. During this process the City of Livingston chose to split from the county and to move forward with a plan to dispose of their solid waste. The City built a transfer and recycling station near the city shops. Eventually, PCCC and Park County reached another settlement.⁸

The amended settlement agreement required the County was charged with having the Zia report reviewed and updated with a special emphasis on studying the economic and technical feasibility of using incineration to dispose of solid waste in Park County. As a result Bell and Associates (Bell) was hired to conduct an updated study. The County continued working through the settlement with PCCC. The “Technical Memorandum on Solid Waste Disposal Alternatives for Park County” is referred to as the Bell report and was presented in November 2011. The Bell report looked at disposal options only.

The Bell report compared the short and long term costs of the following options:

- 1) Existing operation---This option would make no changes and continue with the current operation. The County would continue to operate existing green box collection sites, delivering to the current transfer station, and continue with rail transportation of wastes through Envirocon for disposal. This option would continue limited use of the existing landfill for Class II and IV wastes.
- 2) Livingston Transfer Station---The County would continue the same collection process but wastes would be delivered to the City of Livingston transfer station and the city would handle the waste from that point. The county would be charged per ton. This option would eliminate the County transfer station and landfill.
- 3) Lined cell at County Landfill—This option would construct a lined cell at the current landfill site capable of accepting municipal solid waste. The current transfer station would be closed and wastes would be delivered directly to the

⁷ Cost of the study \$70,000. Legal fees added to the cost of the conflict.

⁸ See Appendix A---PCCC & Park County Settlement Agreement

landfill. Due to the Sundling settlement this option is not currently feasible unless a new agreement can be reached with Mr. Sundling.

- 4) New landfill with lined cell—This option would require the acquisition, development, and permitting of a new landfill facility.
- 5) **Incineration Options**—The Bell report looked at the feasibility of six different incineration options: incineration without energy generation, incineration with steam or electricity generation (WTE⁹) with 22 Tons per day (TPD) or 44 TPD¹⁰. Any of these options would necessitate a detailed and prolonged permitting process. WTE options also require a dedicated industrial customer to purchase any energy generated.

The agreement between PCCC and Park County required findings from the Bell report be presented in a series of community meetings. The report was also available on the County's website and in county offices. A series of public presentations were given by Bell and the Commissioners after the report was finalized. A survey was conducted after the presentation at each of the Commissioners' community meetings¹¹. The majority of the citizens attending the meetings either chose going with the City of Livingston transfer station or keeping the existing operation as their preferred disposal option.

The County and the Solid Waste Board also included a written survey with the new Solid Waste tags mailed to county residents in January 2012. The survey was an attempt by the solid waste board to get public input for the development of a Master Plan and to gain public input on disposal options. A survey question asked which disposal option the respondent preferred. 67% of the surveys responded to this question. Approximately 25% preferred one of the incineration options, 34% preferred the existing county system and 39% chose the City of Livingston option. Results of the survey were presented at a public meeting on March 29, 2012.

⁹ WTE stands for waste to energy and refers to the generation of steam or electric energy as a result of incineration.

¹⁰ Park County currently generates about 22 TPD based on the yearly average of 7,000 Tons per year. This stream is not evenly distributed over the year because seasonal residents and visitors increase the waste generated considerably, and then the flow becomes a trickle with the winter population. This fluctuation in amounts of waste generated make the operation of an incinerator challenging. The comparison to 44 TPD is made because in the solid waste handling business, volume equals cost efficiency. This option would require contracts for trash from other jurisdictions.

¹¹ Results are found in the "Solid Waste Survey Results" in Appendix B.

To satisfy the terms of the amended settlement agreement with PCCC the commissioners, with the recommendations of the solid waste board, must decide how to dispose of Park County's solid waste.

PURPOSE

The purpose of this report is to analyze the options available through the information presented in the aforementioned reports and surveys; through research of systems in neighboring counties; public comments; and through knowledge of the needs of Park County; and after careful consideration, choose the most cost effective and efficient methods for the collection and disposal of our solid waste.

Problems to be addressed in a Future Disposal System:

- Blowables continue to be a problem at the existing landfill. Mr. Sundling and his family have recently expressed concern regarding blowing trash on his property. The county's ability and willingness to control blowables must be considered with all options for disposal.
- In developing a future plan, Park County can only guarantee refuse that is deposited at Park County collection sites. Park County has an average of 8,800 tons of solid waste per year.¹² Park County contacted surrounding counties and Yellowstone National Park to determine their interest in utilizing a Park County incinerator. Only Yellowstone National Park showed any interest.
- The current transfer station is a very old facility. The building was converted to a transfer station when the incinerator was taken out of service. The building is expensive to maintain and offers a dark work area. The site is also on land leased from the Montana Rail Link (MRL). The cost of the lease is steadily rising, and MRL has indicated they would prefer the county move the facility off their property. Any disposal options utilizing the existing Park County transfer station needs to consider these issues.

¹² Estimate from the Bell Report.

DISPOSAL ALTERNATIVES

Advantages and disadvantages of each alternative

A) NO CHANGE ALTERNATIVE

Transfer station would continue to accept refuse from various greenbox sites around Park County. Household refuse and blowables would continue to be compacted at the current transfer site using the existing compactor/railbox system. Compacted refuse would continue to be placed on the rail cars and sent to East Helena. Roll-off Boxes would continue to be taken to the landfill for sorting and burying.

Advantages

No major expenses for buildings. No major expenses to re-design current greenbox sites.

Disadvantages

This option does not solve the blowable issue up at the landfill and Park County is still required to adhere to the Sundling court order. A violation of the Sundling court order may result in litigation. Continued escalation in rent from MRL and increase in disposal with the Envirocon contract.¹³ Front load refuse trucks would continue to be replaced on a ten year cycle. In addition, the transfer station will continue to need cash for required repairs including major expense for the damaged roof.

	LANDFILL	TRANSFER
PAYROLL	154,386	88,408
SUPPLIES	21,797	14,811
SERVICES	73,772	282,138
INSURANCE	15,795	17,550
TRUSTEE FEES	15,923	
CLOSURE/POST CLOSURE	98,593	
DEPRECIATION	57,609	21,142
INTEREST	8,033	
RENT		
TOTAL	445,909	424,049

¹³ Increases estimated to be around 10 percent per year.

COUNTY TONS PROCESSED IN		
FY11	2,229	5,730
COST PER TON	200	74
REVENUE FROM SALES	19,332	16,485
NET COST	426,577	407,564
NET COST PER TON	191	71

B) Incineration

Since 2004, incineration has been a hotly debated disposal option. The Zia and Bell reports came to similar conclusions about the cost of incineration versus other disposal options---Park County does not have enough solid waste, at a sustainable, steady supply¹⁴, to efficiently and cost effectively support an incineration facility at this time. According to the surveys and input taken at public meetings, citizens of Park County do not support increases to their taxes to support an incineration facility. Another obstacle to incineration being a cost effective choice for Park County is the lack of dedicated customers for energy generated. WTE facilities are much more cost effective than straight incineration, but Park County does not have suitable users for this scenario.

A long range goal may be to work with our neighbors to develop a regional incineration facility. This type of facility would spread the permitting and construction costs, along with the operational costs, over a greater population. A regional facility would have a more steady supply of waste. Strategic location of such a facility could assure several energy customer options, making WTE more feasible, hence the facility more cost effective.

¹⁴ Inquiries with Gallatin County, Yellowstone National Park, Meagher County, and Sweet Grass County found little interest in supplying solid waste to an incineration facility in Park County. See memo to Solid Waste Board, October 20, 2011 in Appendix C.

C) New Transfer Station and Restricted Landfill Disposal Options

This option involves building a centrally located County transfer station that would be very similar to the City of Livingston Transfer Station. This is the same system as Broadwater County and Fergus County uses. The waste would be delivered and placed in a live bottom trailer. Any compacted or roll off waste coming in from the Green Box sites would be treated the same. The existing transfer station would be closed. The landfill would have limited access in order to comply with the Sundling Issue. The county would negotiate with regional landfill facilities to find the best disposal costs.

Advantages The county would not have to pay for increased maintenance costs at the existing, aging transfer facility. The county has land by the city shops that could be used for this purpose, thus no new land would need to be purchased. The County may have more flexibility over disposal costs because the county could shop around for the best rates at regional landfills.

Disadvantages Fuel costs will likely continue to rise thus the increase in trucking to disposal sites. Trucking to other sites has limited competitive advantages due to the only firm that can truck the refuse out of Livingston would be Republic Waste. The other transportation option would be Envirocon or County Government. Using Envirocon would require using the current compactor and existing site because the compaction of solid waste would need to occur near the railroad. The County would also be obliged to use the more expensive and heavier MRL designed compactor boxes. Building a transfer station would also require a substantial capital investment by the County. Due to the lack of ability for the compactor to compact woody material, refuse would need to be separated increasing costs and employer liability. A separate roll off box could be placed near the compactor.

If the County chose to use Republic Waste the system would match the city's operation and more than likely very similar costs when looking at disposal options. One of the limitations for options is the lack of competition due to state law. The cost of a transfer station is estimated to be \$79,000/year over 20 years.

	LANDFILL	TRANSFER
PAYROLL	25,000	88,408
SUPPLIES	0	14,811
SERVICES	106,992	275,040
INSURANCE	12,000	17,550
BUILDING	0	79,000
CLOSURE/POST CLOSURE	98,593	
DEPRECIATION	12,000	21,142
INTEREST	0	
RENT		
TOTAL	254,585	495,951
COUNTY TONS PROCESSED IN		
FY11	2,229	5,730
COST PER TON	114	87
REVENUE FROM SALES	19,332	16,485
NET COST	235,253	479,466
NET COST PER TON	106	84

D) City of Livingston Transfer Station

In February 2012 an experiment was conducted to test whether the city's transfer station could handle the county's waste also. The test indicated the city would be able to handle the county's waste. Limited access to the county landfill would be for construction waste, non-blowables in strict accordance with the Sundling settlement agreement.

Advantages

The city has the infrastructure in place. The City of Livingston would have the responsibility for contracting with a disposal firm and any liability of refuse once it hits the floor. The landfill would be available by appointment only, and all loads would be thoroughly inspected before anyone would be allowed to dump. Pay as you go fees would be established at the landfill. There is currently office space available at the County shop and one bay of the County shop could be used for minor maintenance of trucks. There is certainly property available for truck parking and employee parking.

Extremely limited access to the landfill, as well as strict monitoring of loads before they are allowed to dump, is necessary to control blowables at the landfill. This would ensure compliance with the Sundling court order and limit the County's risk of litigation over the issue.

No sorting of garbage would be required at the transfer station. All wastes would be dumped at the City of Livingston transfer station and loaded into trucks for disposal.

Disadvantages

The County would have to depend on the City of Livingston. Employees would still have to handle solid waste due to illegal dumping in the greenboxes because front loading trucks cannot handle construction waste and other large items.

	LANDFILL	TRANSFER
PAYROLL	0	50,000
SUPPLIES	0	5,000
SERVICES	122,595	315,150
INSURANCE	0	0
TRUSTEE FEES	0	
CLOSURE/POST CLOSURE	0	
DEPRECIATION	0	0
INTEREST	0	
RENT		
TOTAL	122,595	370,150
COUNTY TONS PROCESSED IN		
FY11	2,229	5,730
COST PER TON	55	65
REVENUE FROM SALES	0	0
NET COST	122,595	370,150
NET COST PER TON	55	65

E) A New County Landfill

The Bell report estimates the permitting costs of a new engineered, permitted, County owned landfill to be \$300,000-600,000. A suitable site would have to be purchased

and the new facility would have to be constructed. This process would take many years to complete.

Advantages

A new County landfill would address the current blowable issue at the existing landfill. The County would have control over access to the new landfill.

Disadvantages

The permitting process for a new landfill is expensive, takes a long time, is complex, and not guaranteed approval. Due to the general nature of soils in Park County, it would be difficult to find a suitable site.

F) Upgrading Existing Landfill

The Bell Report estimates it would cost approximately \$2,100,000 to engineer, permit and construct a new lined cell at the existing landfill.

Advantages

There would be no land to purchase.

Disadvantages

This option does not address the Sundling court order. The costs of operation at a upgraded landfill would be higher.

RATES

The Park County Solid Waste department is an enterprise fund. This means the program must be fiscally sound and support itself through the collection of fees. No general funds are used for solid waste expenses. The current rate structure is found in Appendix D. Fees are typically assessed with the County tax bill.

APPENDICES

- A—PCCC& Park County Settlement Agreement/terms
- B—Park County Solid Waste Report
- C---Other Solid Waste Sources
- D---Rate schedules Park, Gallatin, Broadwater and Stillwater Counties
- E--- Appendix A from Bell Report

BIBLIOGRAPHY

Zia Engineering & Environmental Consultants, LLC: “City of Livingston & Park County, Montana Solid Waste Management Plan” September 2006

Bell & Associates, Inc. “Technical Memorandum on Solid Waste Disposal Alternatives for Park County” November 2011

Appendix A

PCCC & Park County Settlement Agreement

1
2 MONTANA SIXTH JUDICIAL DISTRICT COURT, PARK COUNTY

3 PARK COUNTY CONCERNED CITIZENS)

Cause No. DV 07-49

4 a Montana not for profit Corporation,)

5 Plaintiffs,)

6 v.)

7 **AMENDED STIPULATED**
8 **AGREEMENT FOR SETTLEMENT**

9 PARK COUNTY, a political subdivision of)
10 the State of Montana,)

11 Defendant.)

12 **AMENDED SETTLEMENT AGREEMENT**

13
14
15 Whereas, Plaintiffs, Park County Concerned Citizens, Edward James Hunt, and
16 Dwayne Chapman filed suit against Park County and Ed Schilling, Ed Carroll and
17 James Durgan in their respective capacities as the duly elected County Commissioners
18 for Park County, in the Sixth Judicial District Court, Park County, Cause Number DV
19 04-131. The Complaint alleged the decision to close the Park County incinerator was a
20 legislative action and thus, was subject to referendum and vote. The Park County
21 Commission filed an Answer denying the same.

22
23 Whereas, the Parties, and each of them, agree that it is in the best interest of all
24 of the citizens of Park County to investigate fully the options of a long term refuse
25 disposal and management plan "Plan" for Park County and to this end have reached a
settlement of the matters alleged and answered in the underlying Complaint hereon.

Whereas, the Parties entered into a Stipulated Agreement for Settlement
("Original Agreement") on October 12, 2004.

Whereas, Plaintiffs, Park County Concerned Citizens, sued Park County in the
Sixth Judicial District Court, Park County, Cause Number DV 07-49. The Complaint
alleged Park County breached the Original Agreement by failing to comply with

1 specific terms of the agreement. An Injunction Order was entered against Park County
2 on May 4, 2007.

3 Whereas, the Parties, and each of them, agree that the Original Agreement
4 should be amended by this Amended Stipulated Agreement for Settlement ("Amended
5 Agreement"). This Amended Agreement shall supersede all terms, conditions and
6 actions of the Original Agreement.

7 Whereas, the Parties, and each of them, agree to fully and completely settle all
8 claims under DV-04-131 and DV-07-49, known and unknown, asserted or unasserted,
9 subject to the following terms, conditions and actions:

- 10 1. Defendant Park County agrees to pay the sum of Sixteen Thousand Two
11 Hundred and Fifty dollars (\$16,250.00) to Park County Concerned Citizens
12 for attorney's fees, and PCCC agrees to release Park County from all claims
13 for attorney's fees to the date of the execution of this agreement.
- 14 2. Plaintiffs shall move to dismiss Sixth Judicial District No. DV 07-49, with
15 prejudice, and therefore, resulting in the lifting of the Injunction Order.
- 16 3. Defendant Park County, through its duly elected commissioners, within
17 three (3) months after the execution of the Amended Agreement shall
18 advertise a request for proposal ("RFP") to hire a consultant to update the
19 September 2006 ZIA Report, titled City of Livingston & Park County
20 Montana Solid Waste Management Plan, this will include particular attention
21 to and analysis of the feasibility of incineration. The RFP shall include but
22 not be limited to the information set forth in Paragraphs 7 and 8 of this
23 Amended Agreement.
- 24 4. The updated ZIA Report, with particular emphasis and attention to the
25 feasibility of incineration, shall be used to determine a long term solid waste
 disposal plan for Park County.
5. One (1) month prior to posting and advertizing the RFP, the County shall
 provide a copy of the request for proposal (RFP) to the Park County Solid
 Waste Board, the City of Livingston and the town of Clyde Park seeking
 their comments and input.
6. Defendant Park County, through its duly elected commissioners, shall allow
 30 days for the submission of the requested proposals. Within two weeks of
 the closure date for the RFP, the County Commissioners shall select the
 consultant. Within 60 days of the consultant's selection the County shall
 enter into a contract with such consultant to prepare the report.

- 1 7. In updating the ZIA Report the consultant will give particular attention and
2 analysis to the incineration option for solid waste management, the
3 consultant shall seek input from city and county officials and the Solid Waste
4 Board and advertise for written comment to be completed 30 days before the
5 completion of the final draft of the update. The consultant shall provide an
6 full evaluation of EPA current regulations; (including all EPA regulations in
7 all stages of EPA's Rulemaking Gateway); and, research and provide a cost
8 benefit analysis including costs and long term operating incomes and costs of
9 incineration, particularly a new incinerator with co-generational capability.
- 10 8. The consultant shall explore the possibility and economic feasibility of
11 operating a Park County incineration facility as a service to outlying entities,
12 such as Meagher County, Sweet Grass County, Gallatin County, and
13 Yellowstone National Park, and shall determine from the governing bodies
14 thereof any interest in participating in a Park County incineration facility as
15 customers. It is expected that this process will take six (6) to eight (8)
16 months to complete from the date the consultant enters into a contract with
17 Park County.
- 18 9. Upon completion of the consultant's report, as set forth in the RFP and as
19 contemplated in the preceding paragraphs, the consultant shall present its
20 analysis and recommendations to the Park County Commission and the
21 public at a public hearing held in the evening at the City County Complex,
22 414 East Callender St, Livingston.
- 23 10. The Park County Commission shall then conduct additional public hearings,
24 including but not limited to, meetings in Gardiner, Wilsall, Emigrant,
25 Springdale and Clyde Park, to disseminate the analysis and recommendations
contained in the report and receive public feedback and input on the best
long term solution for refuse management in Park County. It is expected
that this process will take two (2) to three (3) months after the consultant has
presented its report.
11. The Park County Commission shall within two (2) months of completing the
public hearings set forth in Paragraphs 9 and 10, and taking into
consideration the feedback and input obtained as a result of the Paragraph 9
and 10 public hearings, decide which option set forth in the consultants
updated report.
12. If there is a demonstrable public desire to move forward with establishment
of a new refuse facility, the Park County Commission shall, within three (3)
months after making a decision to move forward with a new refuse facility,

1 take the necessary steps to put the issue of financing a new refuse facility to
2 the vote of the public through a bond measure, at the next available election
3 cycle.

- 4 13. If the public votes to fund a new refuse facility, the Park County
5 Commission shall within six (6) months take all steps necessary to
6 implement a work plan including a time line for the new refuse facility.
- 7 14. If the public votes not to fund a new refuse facility, the Park County
8 Commission shall, within three (3) months of the "no" vote, decide which
9 long term refuse disposal alternative to implement as described in the
10 updated report.
- 11 15. In the event a public desire to construct a refuse facility in Park County is
12 not manifested, as a result of the public process set forth above, Park
13 County, through its duly elected Commissioners, and in accordance with
14 Montana law, shall within three (3) months, agree to an alternate means of
15 long term refuse disposal by implementing one of the alternatives set forth in
16 the consultant's updated report.
- 17 16. It is agreed that all of the foregoing shall be completed within two (2) years
18 of the date of execution of this agreement. If there becomes a need for time
19 in any of the above paragraphs to be extended for good cause, the parties
20 agree to meet and execute a written addendum to this agreement.
- 21 17. The parties agree to act in good faith in the execution of this Amended
22 Agreement.
- 23 18. In the event either party incurs legal expenses to enforce the terms and
24 conditions of this Agreement, the prevailing party is entitled to recover
25 reasonable attorney's fees, expenses, and costs, including paralegal costs,
whether the same are incurred with or without suit.
19. Should it be determined that a party breached this agreement by failing to act
in good faith with the process as set forth above, the remedy for such a
breach shall be the award against the offending party of attorney's fees and
costs from the date of the execution of this agreement.
20. The Parties, and each of them, represent that no additional claims are
contemplated against any other party potentially liability for claimed losses,
damages, and injuries for which the Release is given. The terms of this
Amended Settlement Agreement are not an admission of liability or fault by

1
2
3
4
5
6
7
8
9
10
11
12
13
14
15
16
17
18
19
20
21
22
23
24
25

any party. The terms of this agreement were negotiated as an amicable settlement and are not construed as to the strength or weakness of any position of any party.

Plaintiffs and Defendants have carefully read the foregoing, understand the contents thereof and sign this Amended Settlement Agreement of their own free will.

Dated this 2nd September, 2010.

Park County Concerned Citizens, Inc.

By: Diach Gubade

Its: Exec.

By: Sec. G. Mardue

Its: Sec. Treasurer

Board of Park County
Commission

Marty Malone
Marty Malone

James R. Durgan
Jim Durgan

Randy Taylor R.S.
Randy Taylor

Approved as to Form:

Courtney Lawellin
Courtney Lawellin
Attorney for Plaintiff

ATTEST:

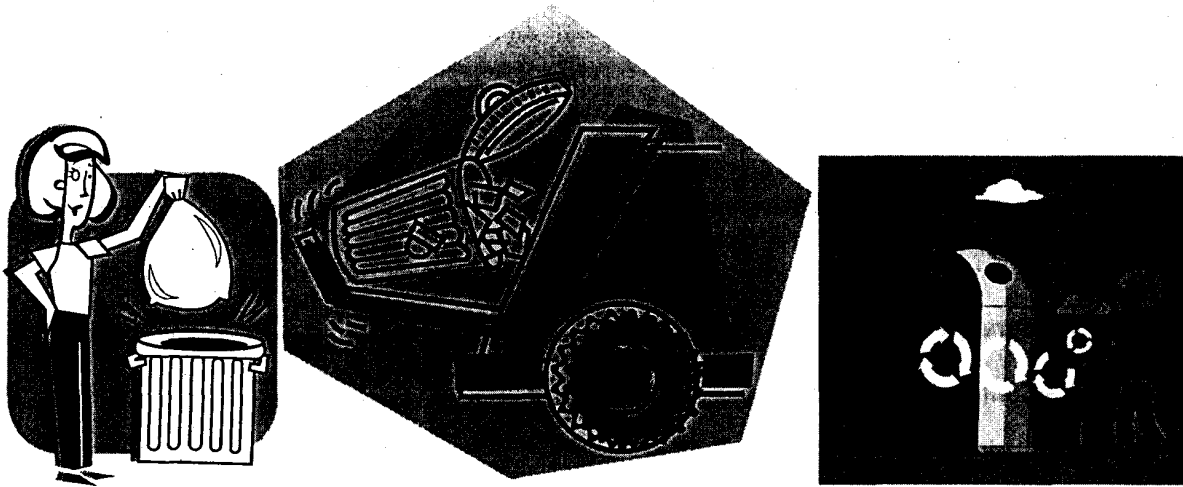
Denise Nelson
Denise Nelson
Clerk and Recorder

Approved as to Form:

Shannan M. Piccolo
Shannan M. Piccolo
Attorney for Defendants

Appendix B

Park County Solid Waste Survey Report



Park County Solid Waste
Survey Results
March 2012
Final Report

Table of Contents

Purpose	3
Method	3
Greenbox Locations.....	5
Results.....	6
Summary.....	22
Appendix A—Survey Form.....	23
Appendix B—Comments.....	25

Purpose

The Park County Solid Waste Board is working on developing a Master Plan to guide the department into the future. One of the main goals of the plan is to look at the existing collection sites, commonly called 'green box sites', to determine how to best manage these sites in regards to controlling collection costs, minimizing liability, protecting workers and citizens, and meeting the public's needs.

Method

Each year Park County mails tags that identify county residents eligible to dispose of garbage at the green box sites, county transfer station, and county landfill. The Solid Waste Board decided this would be an excellent time to survey county solid waste customers, so the survey was included in the packet mailed out by the county with the solid waste tags.

Approximately 5500 surveys were mailed out. The anonymous responses were to be mailed back, brought into the county in person, or the survey could be filled out online at www.surveymonkey.com/s/PCSWSurvey2012. The City of Livingston allowed responses to be collected via their Survey Monkey licensing.¹ Paper surveys that were returned were entered into the Survey Monkey program manually. The original return date of February 15, 2012 was extended to February 17, 2012. Surveys received up until March 2, 2012 were included in the results. 1016 responses were received and are included in this report. Out of county residents were also surveyed. The county sends out approximately 35 tags to out of county residents. These residents live in bordering counties and pay Park County to use our solid waste disposal system. Their responses are reported separately.

The Park County Commissioners held a series of public meetings in communities around the county to discuss the "Technical Memorandum on Solid Waste Alternatives"² report from Bell and Associates.³ The purpose of the Bell report was to satisfy the conditions of a settlement agreement against Park County. The report was charged with fully exploring the different costs of disposal options, especially the option of a new waste incineration facility. Eight meetings were held around the county in Wilsall, Clyde Park, Emigrant, Livingston, Gardiner and Springdale. During these meetings the commissioners conducting an informal 'straw poll' on the disposal alternative preferred by the people attending the meeting. These surveys were very informal, and have less validity because #1—there is no way to determine if each response

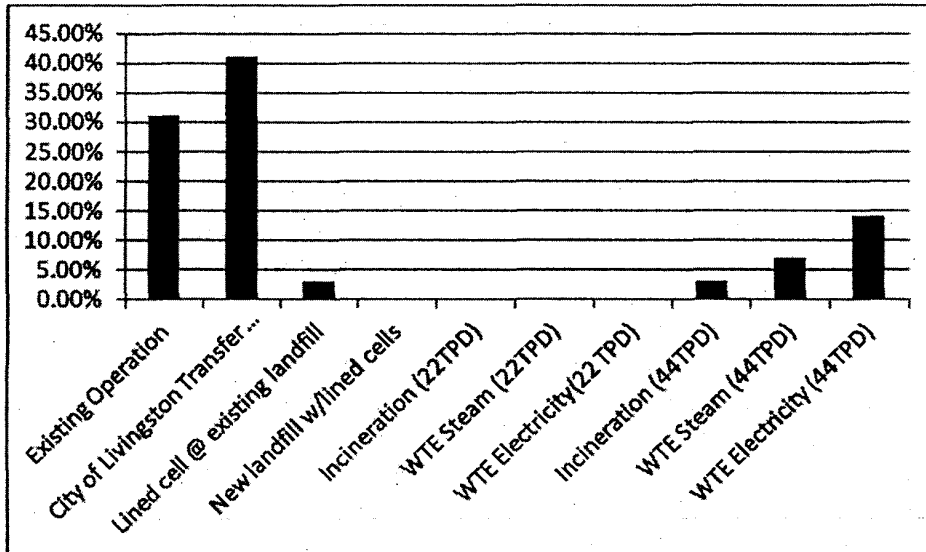
¹ The Solid Waste Board and Park County Environmental Health would like to formally acknowledge the generous assistance from the City of Livingston in conducting this survey.

² This report may be referred to as "the Bell Report" in the body of this document.

³ A copy of this report is available online at <http://www.parkcounty.org/Departments/COMMISSIONERS/Commissioners.html>

was unique and #2—individuals may have attended multiple meetings and voted multiple times and #3—due to technical difficulties, some results from the straw polls were not saved. Generally, the majority of the votes in the public meetings were for either going with the City of Livingston or the County’s current system.

Results from the polls at the commissioner meetings:



Responses to some of the questions may equal more than 100%. The percentages are based on the number of responses for each question. An example of how to read the responses would be: 500 respondents may have answered a question. Of those respondents 85% of them chose “Monday” as the preferred day, and 14.5% of them did not answer this question. People also had an option of choosing more than one answer for some of the questions. For example, respondents could choose all seven days of the week as the days they preferred to have the green box site open. This would result in more than 100% when you add up all the responses.

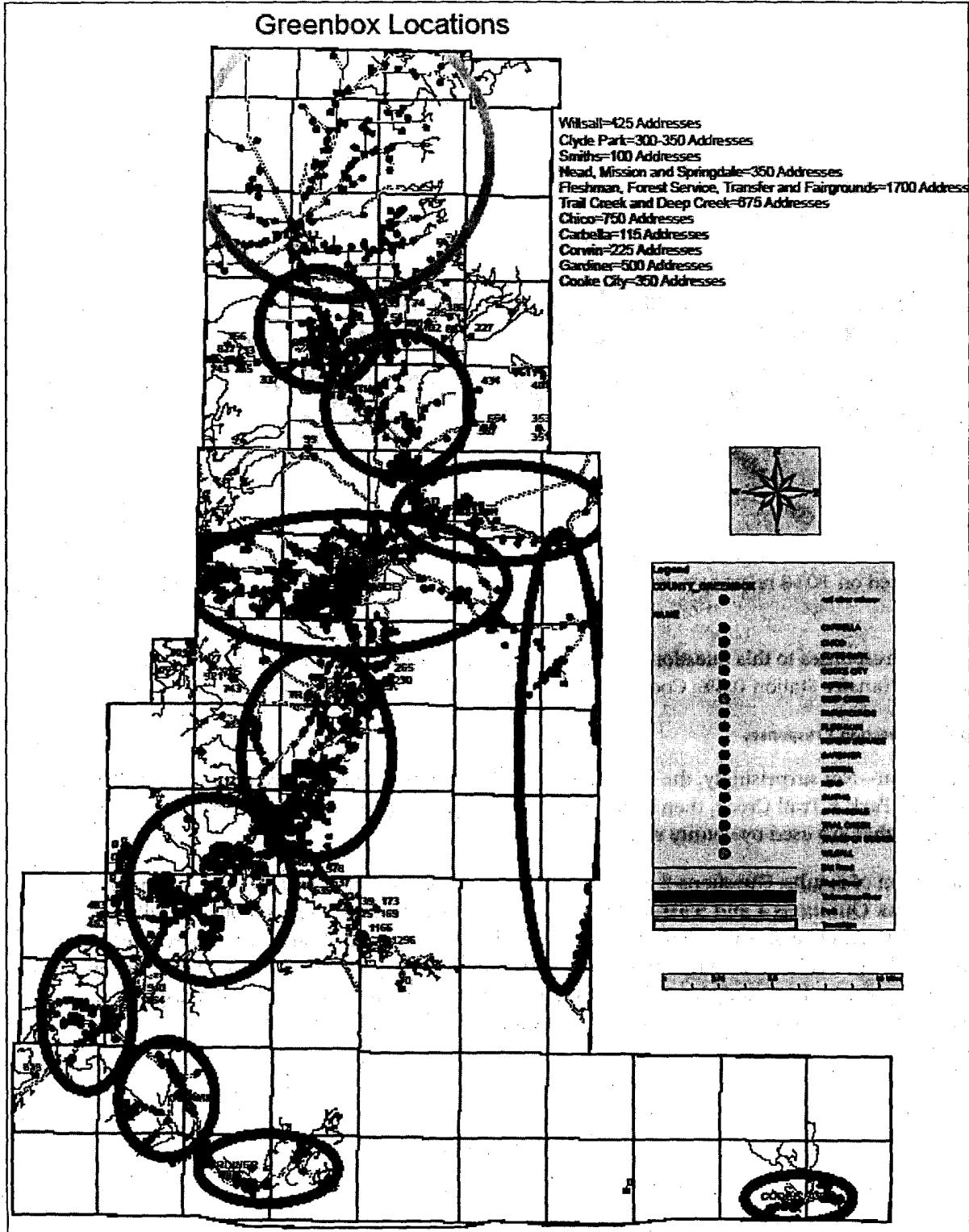
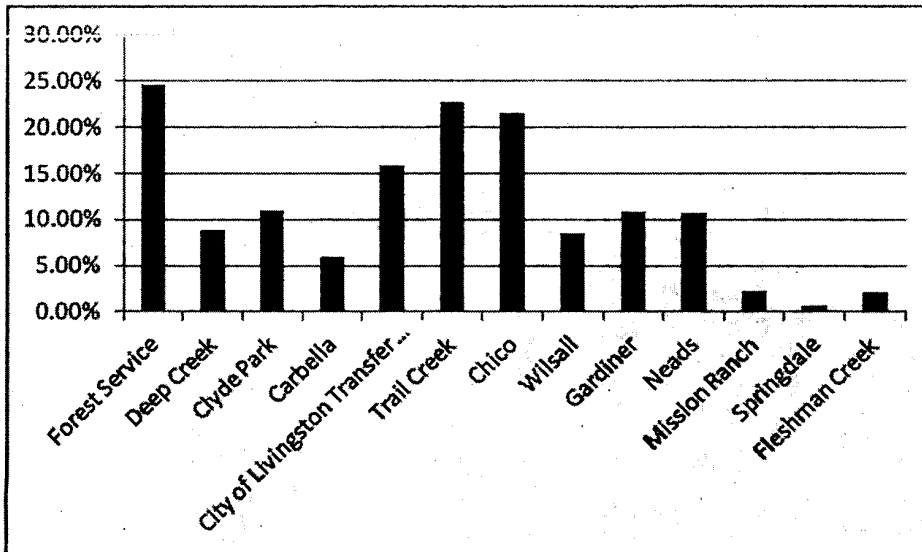


Figure 1. Greenbox sites and an estimation of addresses in close proximity to each location.

RESULTS

➤ Question 1—Which green box site do you typically use?



Note: Based on 1016 responses. People could pick more than one location, so the totals equal more than 100%.

Write in responses to this question include: Smith's 1.4%, Corwin Springs 1.2%, Fairgrounds 0.4%, County Transfer Station 0.8%, Cooke City 0.8%, Landfill 0.01%.

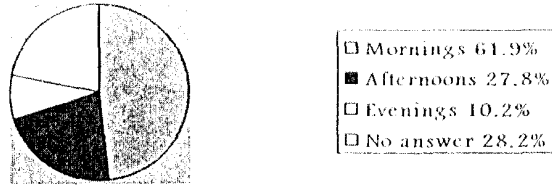
Table 1. Question 1 responses

Discussion--Not surprisingly, the Forest Service Office site was the most frequently used site; followed by Clyde Park & Trail Creek, then Chico and the City of Livingston Transfer station rounding out the top five sites that are used by county residents.

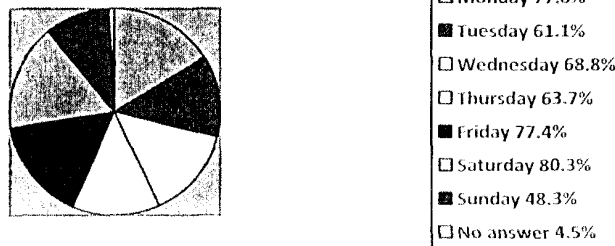
Tabulation of results: Questions 2 and 3 asked about preferred hours and days for green box site operations. Questions 4 and 5 asked about recycling. Responses were cross tabulated with green box site preferences to assess what customers of each site would prefer. Results from these questions are grouped by preferred site. Question 6 is tabulated alone. This question shows how many people take certain wastes to the County landfill. Questions 7 and 8 deal with responses to the disposal options explored in the Bell report. The following is a summary of the survey results:

Forest Service 250 respondents chose this as a site they use.

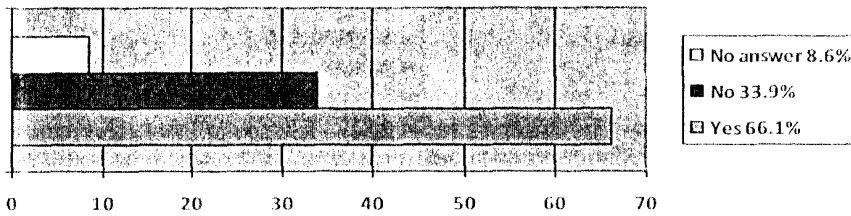
Time of Day preferred at Forest Service Site



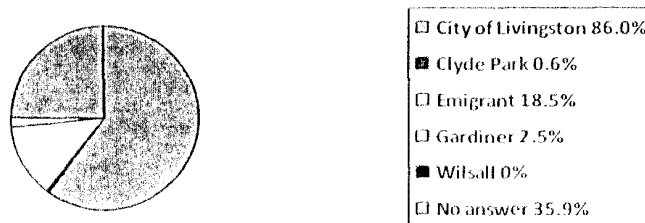
Days of the Week preferred at Forest Service Site



Users of Forest Service Site that recycle

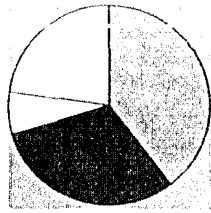


Where do you take recycling?



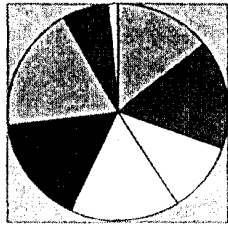
➤ Clyde Park 112 respondents chose this as a site they use.

Time of Day preferred at Clyde Park Site



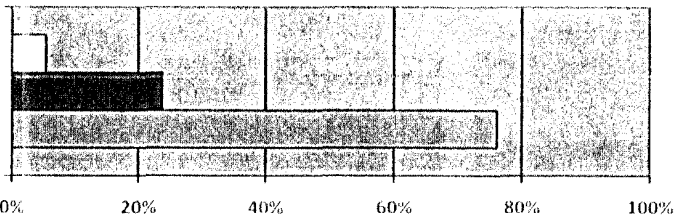
- ☐ Mornings 51.3%
- Afternoons 39.7%
- ☐ Evenings 9.0%
- ☐ No answer 29.7%

Days of the Week preferred at Clyde Park Site



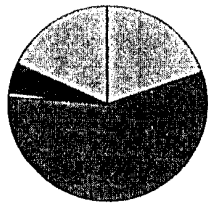
- ☐ Monday 69.9%
- Tuesday 79.6%
- ☐ Wednesday 52.4%
- ☐ Thursday 78.6%
- Friday 80.6%
- ☐ Saturday 93.2%
- Sunday 32.0%
- ☐ No answer 7.2%

Users of Clyde Park Site that recycle



- ☐ No answer 5.4%
- No 23.8%
- ☐ Yes 76.2%

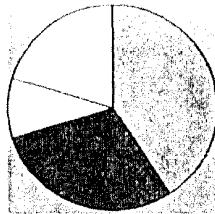
Where do you take recycling?



- ☐ City of Livingston 29.6%
- Clyde Park 82.7%
- ☐ Emigrant 0%
- ☐ Gardiner 1.2%
- Wilsall 7.4%
- ☐ No answer 27%

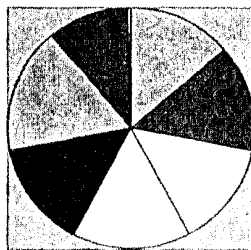
➤ Trail Creek - 231 Respondents chose this as a site they use.

Time of Day preferred at Trail Creek Site



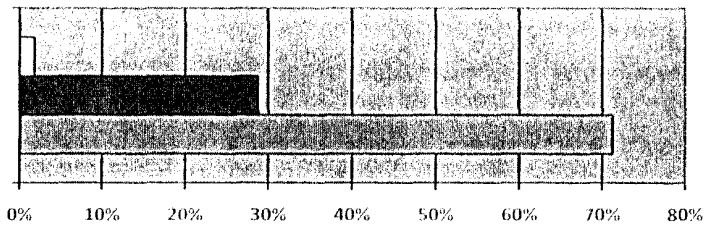
- ☐ Mornings 51.2%
- Afternoons 36.9%
- ☐ Evenings 11.9%
- ☐ No answer 25.7%

Days of the Week preferred at Trail Creek Site



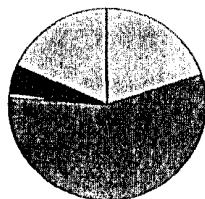
- ☐ Monday 68.2%
- Tuesday 72.7%
- ☐ Wednesday 72.7%
- ☐ Thursday 76.4%
- Friday 73.6%
- ☐ Saturday 85.5%
- Sunday 52.7%
- ☐ No answer 2.7%

Users of Trail Creek Site that recycle



- ☐ No answer 1.8%
- No 28.8%
- ☐ Yes 71.2%

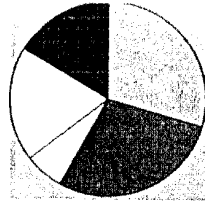
Where do you take recycling?



- ☐ City of Livingston 29.6%
- Clyde Park 82.7%
- ☐ Emigrant 0%
- ☐ Gardiner 1.2%
- Wilsall 7.4%
- ☐ No answer 2.7%

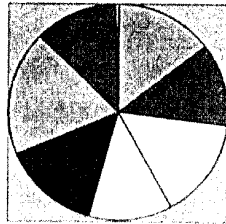
➤ Chico - 218 Respondents chose this as a site they use.

Time of Day preferred at Chico Site



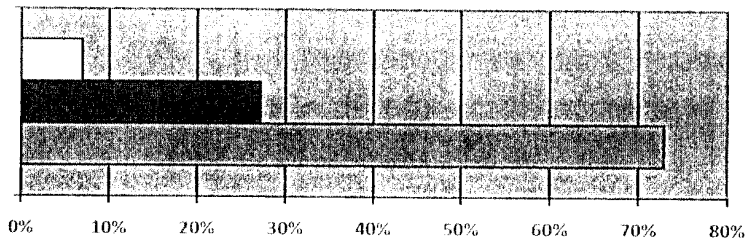
☐ Mornings	45.7%
■ Afternoons	44.3%
☐ Evenings	10.0%
☐ No answer	29.3%
■ Other	26%

Days of the Week preferred at Chico Site



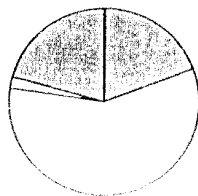
☐ Monday	71.9%
■ Tuesday	61.5%
☐ Wednesday	74.0%
☐ Thursday	61.5%
■ Friday	70.8%
☐ Saturday	92.7%
■ Sunday	60.4%
☐ No answer	3%

Users of Chico Site that recycle



☐ No answer	7%
■ No	27.2%
☐ Yes	72.8%

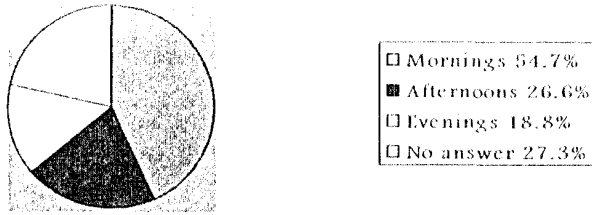
Where do you take recycling?



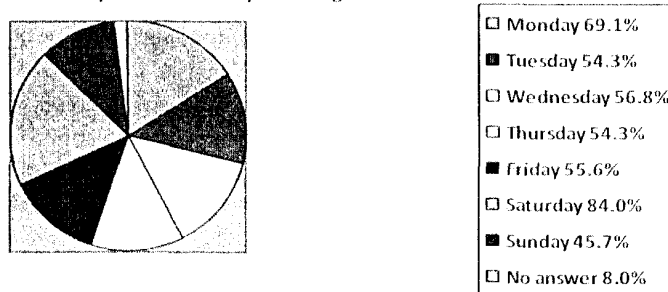
☐ City of Livingston	27.5%
■ Clyde Park	0
☐ Emigrant	84.1%
☐ Gardiner	2.9%
■ Wilsall	0
☐ No answer	30.0%

➤ City of Livingston Transfer Station – 161 respondents chose this as a site they use.

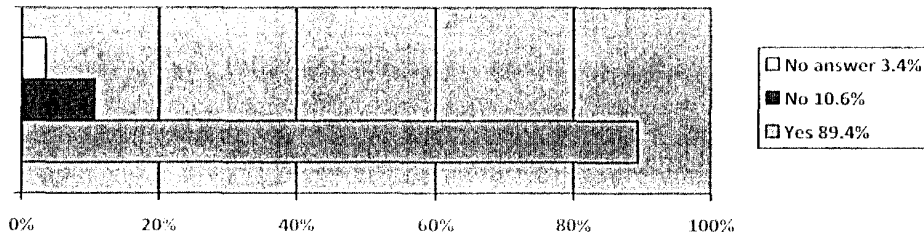
Time of Day preferred at City of Livingston Transfer Site



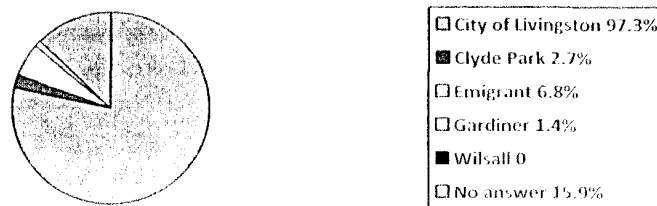
Days of the Week preferred at City of Livingston Transfer Site



Users of City of Livingston Transfer site that recycle

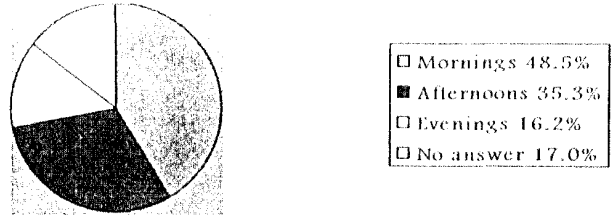


Where do you take recycling?

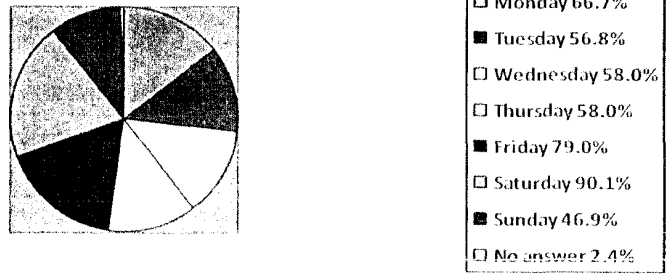


➤ Gardiner – 110 respondents chose this as a site they use.

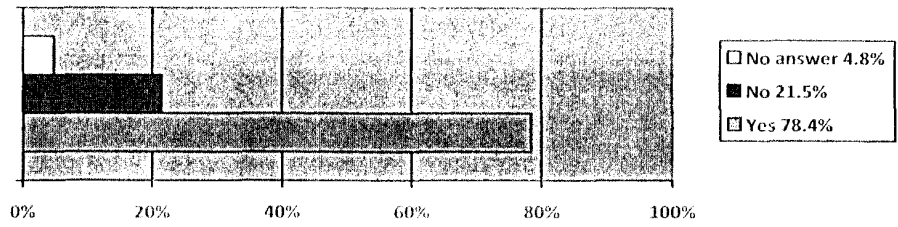
Time of Day preferred at Gardiner Site



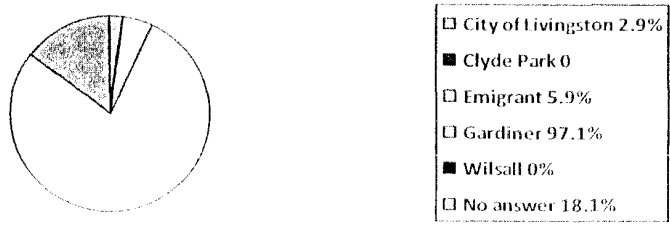
Days of the Week preferred Gardiner Site



Users of Gardiner site that recycle

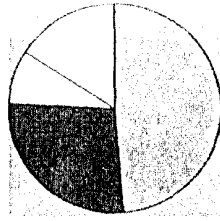


Where do you take recycling?



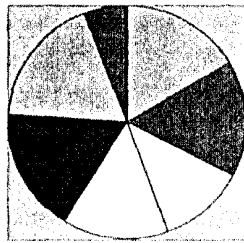
➤ Wilsall - 85 respondents chose this as a site they use.

Time of Day preferred at Wilsall Site



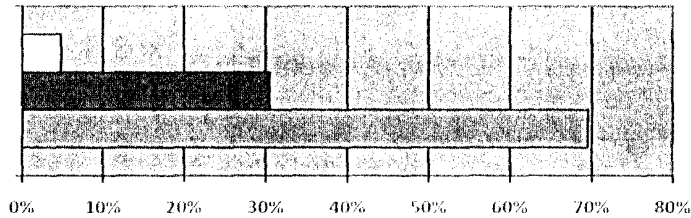
☐ Mornings	58.0%
■ Afternoons	32.0%
☐ Evenings	10.0%
☐ No answer	19.3%

Days of the Week preferred Wilsall Site



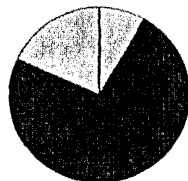
☐ Monday	75.4%
■ Tuesday	73.8%
☐ Wednesday	54.1%
☐ Thursday	65.6%
■ Friday	78.7%
☐ Saturday	83.6%
■ Sunday	24.6%
☐ No answer	1.6%

Users of Wilsall site that recycle



☐ No answer	4.8%
■ No	30.5%
☐ Yes	69.5%

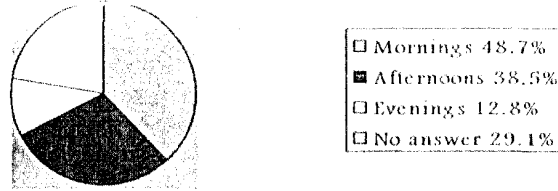
Where do you take recycling?



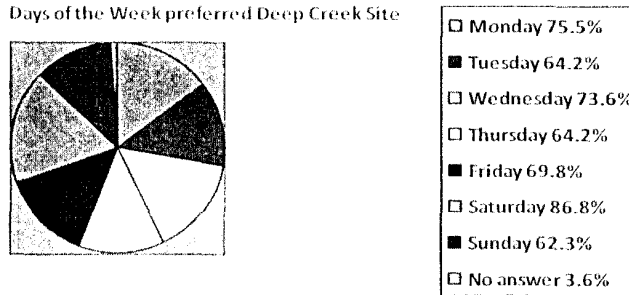
☐ City of Livingston	10.4%
■ Clyde Park	0
☐ Emigrant	0
☐ Gardiner	0
■ Wilsall	91.7%
☐ No answer	22.6%

➤ Deep Creek – 89 respondents chose this as a site they use.

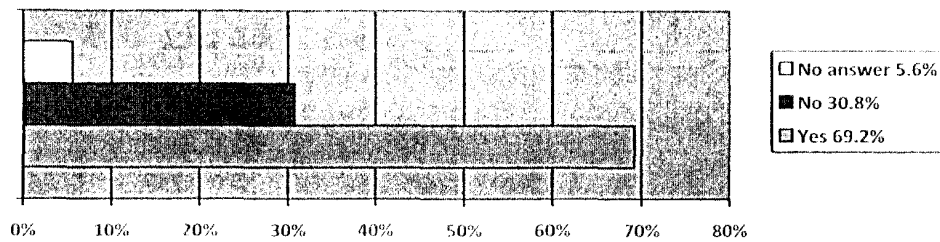
Time of Day preferred at Deep Creek Site



Days of the Week preferred Deep Creek Site



Users of Deep Creek site that recycle

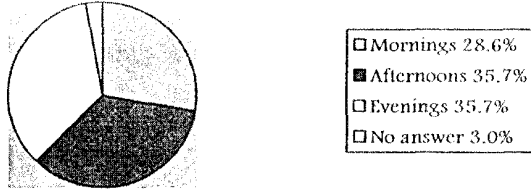


Where do you take recycling?

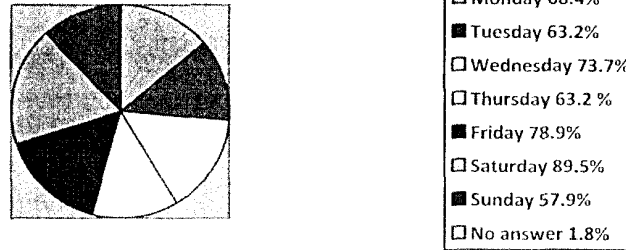


➤ Fleshman Creek – 21 respondents chose this as a site they use.

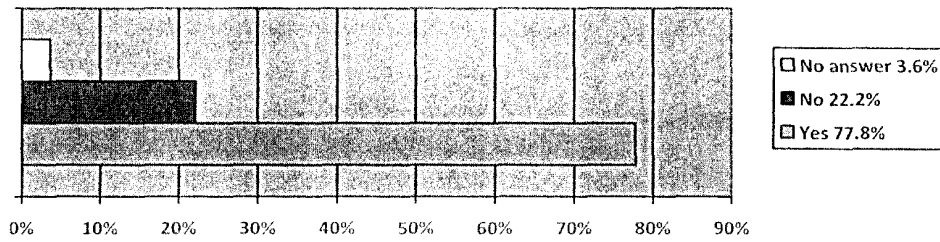
Time of Day preferred at Fleshman Creek Site



Days of the Week preferred Fleshman Creek Site



Users of Fleshman Creek site that recycle

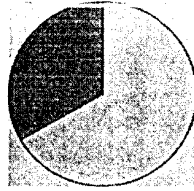


Where do you take recycling?



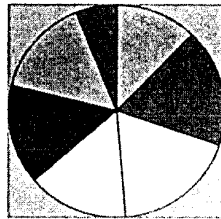
➤ Springdale--7 respondents chose this as a site they use.

Time of Day preferred at Springdale Site



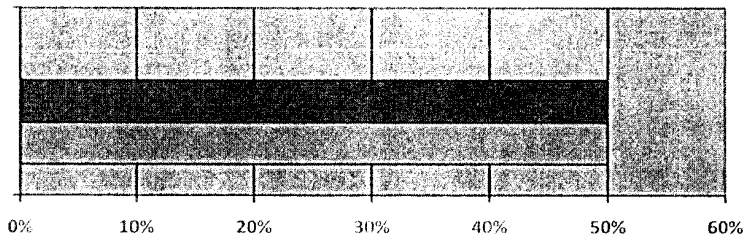
- ☐ Mornings 66.7%
- Afternoons 33.3%
- ☐ Evenings 0
- ☐ No answer 0

Days of the Week preferred Springdale Site



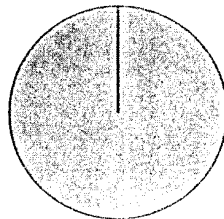
- ☐ Monday 66.7%
- Tuesday 100%
- ☐ Wednesday 100%
- ☐ Thursday 83.3%
- Friday 83.3%
- ☐ Saturday 83.3%
- Sunday 33.3%
- ☐ No answer 0

Users of Springdale Creek site that recycle



- ☐ No answer 0
- No 50%
- ☐ Yes 50%

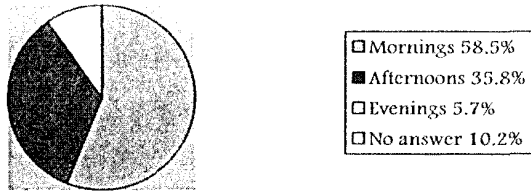
Where do you take recycling?



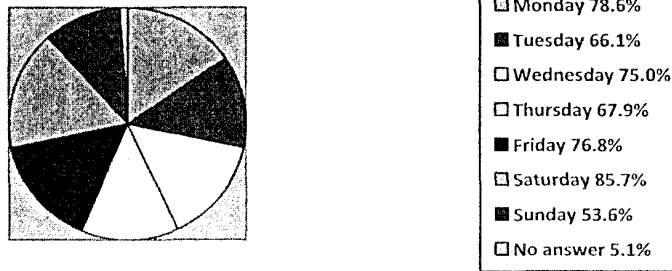
- ☐ City of Livingston
- Clyde Park 0
- ☐ Emigrant 0
- ☐ Gardiner 0
- Wilsall 0
- ☐ No answer 66.7%

➤ Carbella—60 respondents, Mission Ranch—22 respondents, Smiths—14 respondents

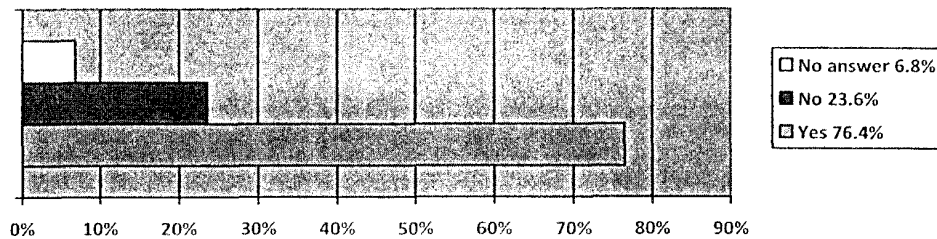
Time of Day preferred at Carbella, Mission Ranch & Smiths sites



Days of the Week preferred Carbella, Mission Ranch & Smiths sites



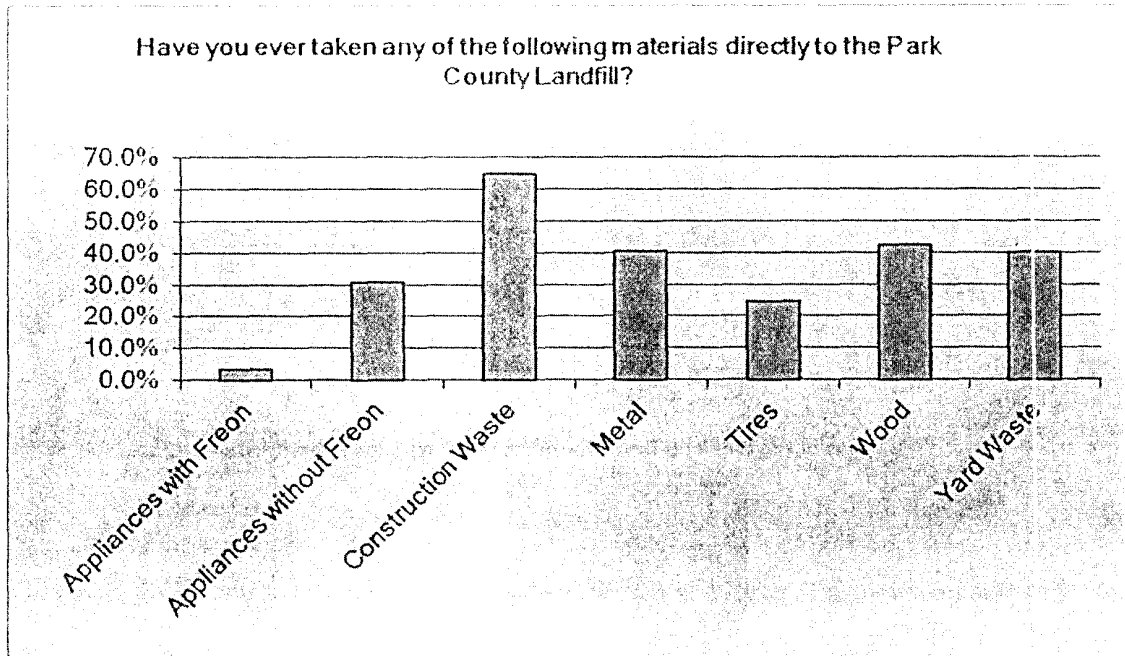
Users of Carbella, Mission Ranch & Smiths sites that recycle



Where do you take recycling?

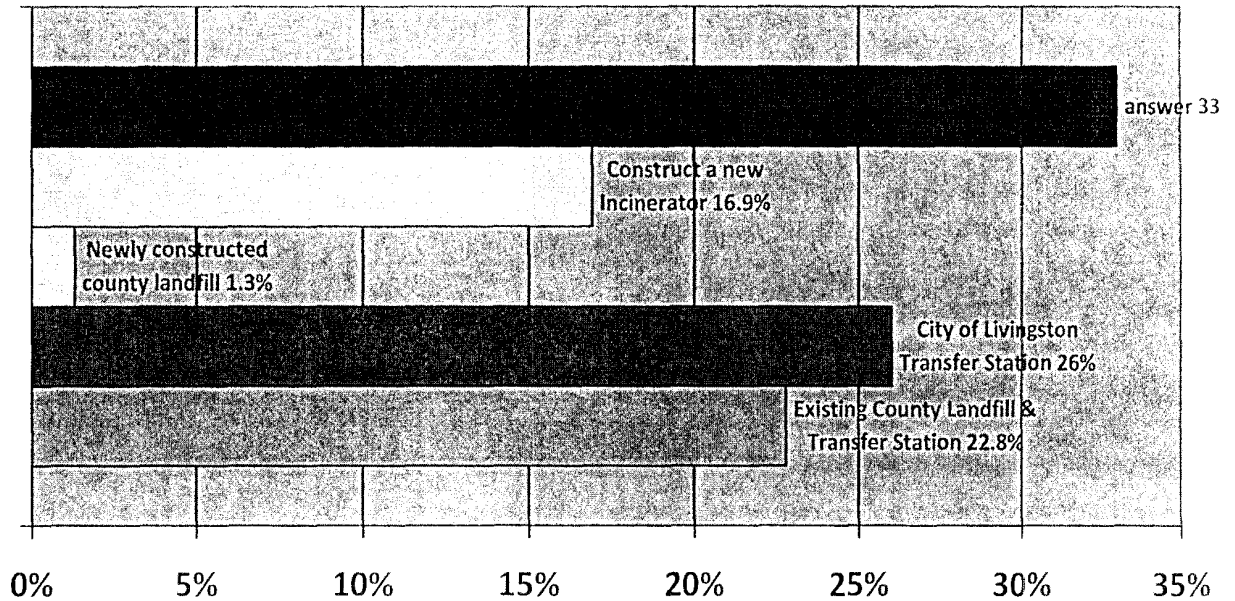


➤ Question 6--Have you ever taken any of the following materials to the Park County landfill?

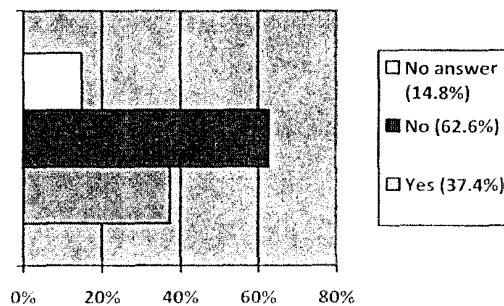


Answer Options	Response Percent	Response Count
Appliances with Freon	3.2%	17
Appliances without Freon	30.6%	165
Construction Waste	64.6%	348
Metal	40.3%	217
Tires	24.7%	133
Wood	42.5%	229
Yard Waste	39.9%	215
<i>answered question</i>		539
<i>skipped question</i>		453

- Question 7 of the survey asked about possible disposal options based on the “Technical Memorandum on Solid Waste Disposal Alternatives” by Bell and Associates. The question asks which disposal method citizens preferred after reading the report or listening to a public presentation about the options.

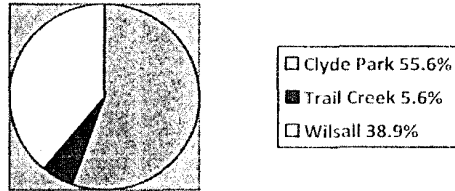


- Question 8 asked if people would support approximately \$59-180 per year increase in taxes to support a bond issue to pay for a new incinerator facility.

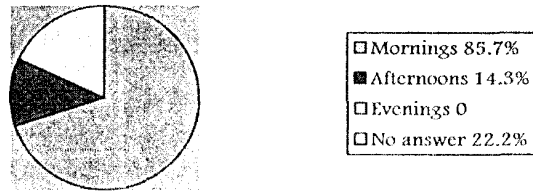


- **Out of County Responses**—Approximately 35 residences, that reside near the Park County boundary but are in different counties, choose to pay Park County to dispose of their solid waste in several green box sites. Approximately 18 out of county responses were received.

Out of County Customers' Greenbox Sites



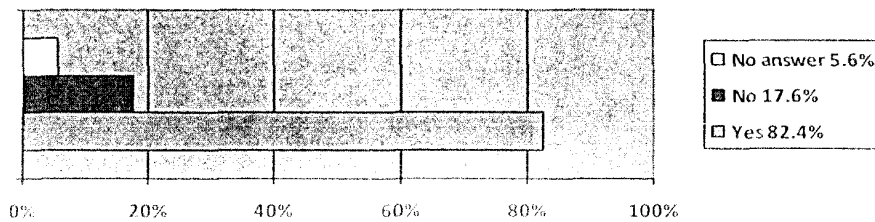
Time of Day preferred at Out of County Customers



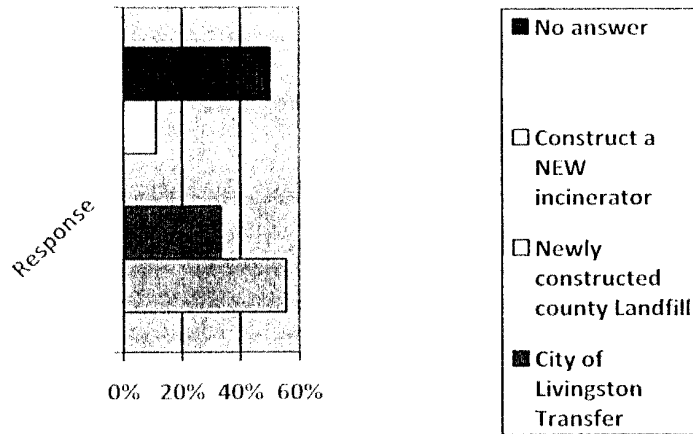
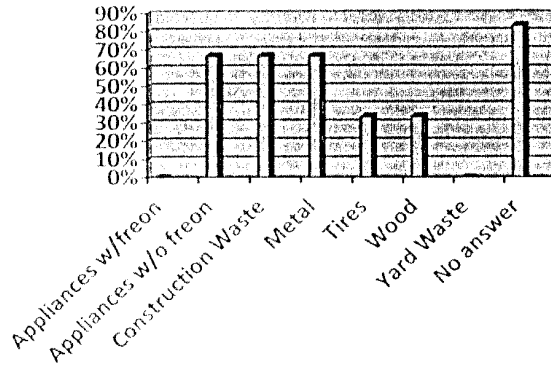
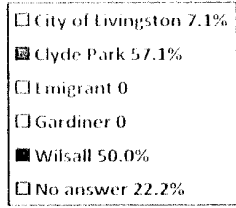
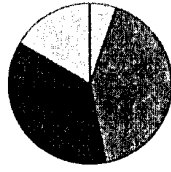
Days of the Week preferred by Out of County Customers



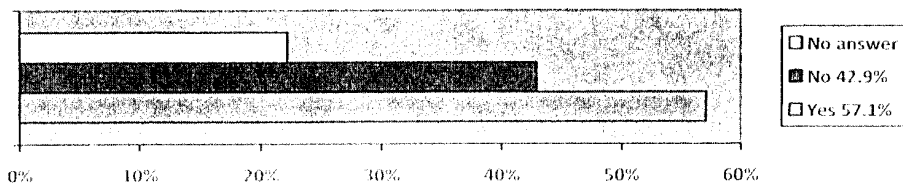
Out of County customers that recycle



Where do you take recycling?



Out of County Customers that would support increased taxes for an incinerator



Summary

- 1) Basically, people want the greenbox sites open at least 6 days a week---over 2/3 of the respondents wanted the sites open Monday-Saturday. Only about 45% of the respondents included Sunday. As the Master Plan is developed, having sites in close proximity to each other open on opposite days could meet this need without each site being open seven days a week. For example, Chico might be open Monday, Wednesday and Friday and Trail Creek would be open Tuesday, Thursday and Saturday.
- 2) Respondents also wanted the boxes open 24 hours a day. As the Master Plan is unveiled in the county, it will be important to educate the public why 24/7 access is not feasible for the future. In many of the comments, people felt signage at the greenbox sites and written reminders with new solid waste tags would be sufficient to gain peoples' compliance with proper disposal. Many comments felt with education manned sites would not be necessary and the sites could remain open 24/7. The Master Plan may want to consider if there are other surveillance methods that could allow for greater hours of access, yet still monitor the sites.
- 3) The Master Plan needs to assess the recycling process and efforts. The citizens responding to the survey are very dedicated to recycling. 67% of the respondents said they recycle. Many of the comments called for more recycling opportunities by making collection bins available at more greenbox sites and having the opportunity of recycling more materials.
- 4) Question 6 indicates about half the residents have taken waste for disposal to the county landfill. The Master Plan will have to include an option for people to dispose of these types of wastes in the future.
- 5) Questions 7 and 8 were added to the survey to attempt to get input from the citizens of Park County on disposal options as presented in the Bell Report. Question 7 asked people to chose the disposal option they preferred. 681 people answered this question, representing 67% of the respondents. Only 13 respondents chose a new county landfill as their preferred disposal option. 172 respondents, 25.3% of the people that answered this question, chose the construction of a new incinerator as their preferred option. 232 people, 34% of the people who answered this question, preferred the existing county system; while 264, approximately 39% felt partnering with the City of Livingston's transfer station was the best option. Question 8 asked if the respondents would support a tax increase to pay for a new incinerator. 866 people, representing 85% of the respondents, said they would NOT support tax increases to pay for an incineration unit. Many of the comments on incinerators were critical of the county for letting the previous incinerator go to disrepair and eventual closure. Several commented that an incinerator was preferable to burying waste. Many comments indicated they felt an incinerator could be cost effective if solid waste from surrounding counties and Yellowstone Park were burned. There was also a perception the project would generate energy, and thus generate revenue to offset operational costs.

Appendix A—Solid Waste Survey

The Park County Solid Waste Board is working on a Master Plan to meet the solid waste collection and disposal needs of the County into the future. The following survey is an effort to hear what the citizens served by Park County Refuse Department need and want for solid waste disposal and collection. Please complete the survey at www.surveymonkey.com/s/PCSWSurvey2012 OR, if you prefer, please fill out the survey and mail it in the self-addressed envelope by February 15, 2012. The results of the survey will be made available on our website www.parkcounty.org.

Park County Solid Waste Survey

- 1) What green box site(s) do you typically use? Please check all that apply.
Forest Service _____ Trail Creek _____ Neads _____
Deep Creek _____ Chico _____ Mission Ranch _____
Clyde Park _____ Wilsall _____ Springdale _____
Carbella _____ Gardiner _____ Fleshman Creek _____
City of Livingston Transfer Station _____

- 2) Currently, the green box sites are open all hours and unmanned. This allows mixed refuse to be dumped in the green boxes. The county is required to separate out the refuse and this process is very costly to the county, as well as increasing liability for illegally disposed of materials. Thus our Master Plan for solid waste collection will need to establish set hours at the green box sites. What hours would you like the green box sites to have?
Mornings _____ Afternoon _____ Evening _____ Other _____

- 3) What days of the week would you like the green box site to be open?
(Check all that apply)
Monday _____ Tuesday _____ Wednesday _____
Thursday _____ Friday _____ Saturday _____ Sunday _____

- 4) Do you currently recycle?
Yes _____ No _____

- 5) Where do you take your recycling? (Check all that apply)
Clyde Park _____ Emigrant _____ Wilsall _____
City of Livingston Transfer Station _____ Gardiner _____

- 6) Have you ever taken any of the following materials directly to the Park County landfill? Please check all that apply.
Appliances without Freon _____ Tires _____
Appliances with Freon _____ Yard waste _____
Construction waste _____ Wood _____
Metal _____ Other (please describe) _____

★ Please continue with the survey on the back of this page



7) Park County produces about 8,000 tons of solid waste annually and has two tasks with regard to solid waste; the collection of the waste and the disposal of the waste. The County has researched disposal alternatives and the costs associated with each alternative. Listed below are the disposal alternatives, including our current transfer station and landfill program. Please tell us what disposal option you feel is best for Park County. (A copy of the complete “*Technical Memorandum on Solid Waste Disposal Alternatives*” is available on the Park County website: www.parkcounty.org under ‘Refuse Department’ and copies are available at the offices of the County Commission)

- Existing Transfer Station & Landfill (\$120/ton) _____
- City of Livingston Program(\$53/ton) _____
- Newly constructed & permitted lined county landfill(\$200-\$250/ton) _____
- Incineration operation(\$145-\$267/ton) _____

NOTE: The above costs include disposal costs only. Collection costs are very similar for each of the disposal options and not included.

8) It is estimated that the cost of building an incineration facility would increase taxes approximately \$59-\$180/year. Would you support a bond measure to finance an incineration facility?
 Yes _____ No _____

9) Do you have any problems or concerns about solid waste disposal in Park County?

10)Community Meetings: The Park County Commissioners will be conducting community presentations on the Bell & Associates “*Technical Memorandum on Solid Waste Disposal Options*” to fully explain the costs of solid waste disposal options at the following locations:

- January 10, 2012 7:00pm Wilsall Firehall, Wilsall
- January 12, 2012 7:00pm St. Margaret’s Catholic Church, Clyde Park
- January 17, 2012 7:00pm Emigrant Hall, Emigrant
- January 19, 2012 7:00pm Gardiner Community Center, Gardiner
- January 24, 2012 7:00pm Community Room, Livingston
- January 26, 2012 7:00pm Springdale School, Springdale

Appendix B—Public Comments

- Comments—Respondents were asked for comments and concerns.
- I just wish people would have enough honor to just put bagged garbage at green boxes! They should be ashamed of all the junk they put in there!
- Very happy with disposal locations
- Private contractor?
- Promote more recycling by putting recycle bins at green box locations—include bins for glass and cardboard. Locking green box gates was tried several years ago—why would it be effective now if it didn't work before?
- Green boxes not very clean & well kept
- Incineration is too polluting of the air. I support Park County's efforts 100%.
- Recycling improvements at transfer station have been fantastic but bins are often full. Would like to see more bins and expansion to other items. Also, would it be possible to add recycling to green box sites? It might encourage recycling uptake.
- Would like an annual letter to all users on separation required
- No problems, I feel solid waste disposal is done well.
- Leave it open 24/7 put in marked designated bins for each separate material;
- You had an incineration facility that was grandfathered in beneath the EPA regs.-
--Use it!
- Need place to recycle glass and cardboard near Emigrant recycle at the green boxes
- motion detectors at the gates
- signs on specific boxes for wood, metal, trash etc
- tires are a big concern
- more education of the people of how to dispose properly
- what ever has the less impact on the environment
- may want to check into Whitehall's operation they are very efficient
- private garbage contract would probably work best
- we miss recycle boxes
- yes, your screw ups keep costing us money
- 24-7 is absolutely necessary
- need recycle at every box site
- dispose of instead of storing.
- cant you guys find a way to make money on this garbage deal, bet I could, greg Parks
- need long term plans
- return cardboard bins
- need recycle bins at collection sites
- better control of the box sites, people are abusing the sites
- need recycle bins at ALL green box sites
- need more control in our area
- need recycle bins at each sight
- most economical way
- want responsible disposal for the long term
- why not dispose instead of storing our trash
- close the land fill
- salvage plastic metal & gas, sell for operating costs
- not enough recycling in cook city
- In favor of an incinerator that would produce electricity and be able to accommodate more waste than park county produces. So that we could make

money disposing of other county's waste, and in turn pay off the debt to build the incinerator faster.

- need more recycle sites that are more convenient
- people will sort themselves if they had containers for oil, wood, plastic etc
- hauling waste is going to get more and more expensive, gas, wages, etc
- why was card board recycling stopped
- best way to get rid of waste items that are still usable is to setup piles of give a ways
- BECAUSE OF OUR WIND, I STRONGLY RECOMMEND THE INCINERATOR
- GREAT INCONVENIENCE WHEN REQUESTED TO DRIVE 50 MILES TO GET THERE
- NO RECYCLE BINS AT NEADS WHY? CITY AND COUNTY ARE NOT SERIOUS ABOUT RECYCE
- WOULD ALSO BE NICE TO HAVE NEWSPAPER AND GLASS BINS AT SIGHTS
- YES, WHY WAS THE INCINERATER CLOSED
- I would like to see the green box sites manned once again. A greater recycling effort is needed with more collection sites and the return of cardboard recycling. Have you seen how much is thrown away from Chico Resort that could be easily recycled!!
- There needs to be a fair and accurate way for the county to charge Gardiner residence to use the roll-off. I don't understand why the rest of the valley can have roll offs with no charge for what they put in them.
- Have the season for burning extended all year..
- We must have some 3 boxes at least glass for ? solids - especially there's no glass boxes for recycling.
- no
- A composting option would help decrease waste. We burn burnables and recycle recyclables. When we composted this helped alot to decrease quantity of household waste. Now we live in town and our waste has increased.
- Every time we take our trash, we see all kinds of cardboard boxes- not even flattened. Why not have recycling bins near regular green boxes to make it easy to recycle? Also, an advertising campaign about recycling? Making it easier to recycle and making it seem to be the thing to do could cut down on mess & weight.
- businesses need to empty every day . It is important to have Chico boxes available 7days per week.
- Waste is a problem that is not going to get better. We need to get into the future of waste and be ahead of the current situation. Incineration is the best long term solution.
- More people would recycle if there were bins at the green box sites. Might cut down on solid waste.
- double billing on bunkhouse not used as B & B any more
- I think current method and time are very convenient.
- I think half of Liv people bring their waste out to the forest Service site. The City does not pick up their garbage only what in their blue can therefore that the easy place for them to go. I'm retired on a fixed income with a small 1 or 2 bags a week. I resent paying for everyone. I do however think it should be allowed or people traveling to be able to dispose of their garbage, beats it being dumped along roads.
- Combine city and county and hopefully it will be less expensive.
- I feel we should construct an incinerator with generator for power,
- I don't want to limit green box site hours, nor do I want to pay someone to sit there. We can sort out garbage if we know what needs to go elsewhere. If you provide the container we can put it there. A hazardous materials container would

- be great for old batteries and those green light bulbs.
- what happened to the old incinerator?
- It's already a big cost for an 80 year old woman
- Charge us what it costs to do it right
- Roy does a good job in Wilsall. The site is always clean and Roy has a good disposition.
- what happened to 8 to 10 million of BN money and all the money the city paid to operate and close landfill . Money should be spent on garbage since it's garbage money
- the more you make it difficult to dispose of garbage, the more garbage will find another place to go.
- What was done with all the money from the lawsuit against BN years ago for for dumping in the landfill and why couldn't this money be used to build a new incinerator?
- work with city - educate residents to recycle to reduce solid waste. If county doesn't educate then should build an incinerator for excess waste
- At Chico, JR, your employee pulled out useful items for folks to take home - 2x4, firewood, furniture, clothing, bicycles, windows, doors, etc. Everyone love the service, please allow other sites to do the same.
- The green boxes should be left open so the garbage gets in there instead of along every road in the County!
- I appreciate the issues load by Park Co in this regard and look forward to learning more at the meeting below.
- the incineration facility should never had been closed. it is evident upgrades and cheaper than construction.
- Need to have two solid waste containers in Gardiner. There should be set rules posted on a sign the enforced, I had a few loads of shingles to get rid of and I was willing to pay but told to go to Livingston.
- too many residents have work hours not compatible also, have recycling bins at the green box sites.
- no
- entering into an agreement with the City better be done with eyes open.
- Please consolidate with city and close county and stop wasting money on studies to get incinerator. Too expensive and polluting. Stop talking about the incinerator and put toward recycling efforts with the city.
- waste being hauled from non-paying folks (town) non enforcement of regulation and abuse (increase penalties and community service for violators)
- No problems - the green boxes are great!
- County and city should quit fighting and go with a combined program.
- we don't get service now and are taxed for it
- We pay alot in taxes and drop off our own trash. We don't want days or times to drop it off. That old system w/people at the dump sites was very confining. People called them the trash nazis.
- Additional recycle locations (Trail Creek) are needed.
- You could generate electricity with an incinerator, (via steam) and probably pay the majority of long term costs - you could have done that with the old incinerator try to think outside the box once in awhile - like what the city doing right
- need more information
- City and County will still have landfill type waste and will still cost county per ton approx \$70.00 a ton, no savings in city plan what's in it for the City
- We must keep the dump sites open enough so garbage doesn't build up in people concentrations.
- dump sites must be open enough days, even if shorter hours to keep bear attractant away from people.
- It's better to have the bear hang around dump sites than people areas.

- yes, we need to stop putting waste into the earth
- What about all the money you have at the ban to go toward ? incinerator
- but why not use the money that was received from the Burlington Northern
- don't know enough to comment but the recycling center and landfill disposal sites have been useful to me
- over the years there have been discussions of closing the green boxes at the Forest Service. Your records would tell but I believe that location is one of the most used in the county Five Acre tracts and wineglass. As for the day I use it twice a week and there are always 3 or 4 vehicles there. One day a week will not serve the public. Also where is the County garbage going. Paper has it Logan one time and Helena or Great Falls the next.
- no
- Of course
- Ray does an excellent job caring for the facility in Clyde Park. Residents need to stop being so lazy and act like adults.
- new bids on incineration situation open to public. Cuts need to be made elsewhere to get prices down. Where did old incineration station go. No new trucks cuts need to be made.
- don't know enough about this to have an opinion. I like things the way they are now.
- Only the inconvenience for myself ????? that cannot drive
- whats wrong with creating jobs with an incinerator and lowering the effect on a landfill.
- We think the money left from the BNSF should be used in part & sell bonds for the rest, instead of raising taxes. We never should have left the incinerator in place and upgraded it to a more functual facility-such as medical waste & raised money from cities and towns nearby, That would have been a win-win solution instead of hauling our garbage around the country - a very bad decision to say the least.
- Access imperative to keeping our county clean. 8-5 does not work for all people, needs to be open on Saturday.
- The transfer station is not well organized, difficult to tell if the transfer station will or will not take items, too much personal evaluation - encourages cheating would be better if facility were there to take everything at one place like the city transfer station.
- I wish there were recycle bins at the Forest Service greenbox site.
- the existing incinerator was shut down due to mercury being released into the air. I live NE of the old incinerator, when winds blow from the SW, they head from old incinerator towards my house. Mercury is a heavy metal. Where are you planning on building a new incinerator? If you consider this, it should be built where toxins in the air are not blowing over populated areas.
- Air, water, soil pollution!
- We need more recycling options. I live part time in Seattle.
- enhance and clean-up the recycling; look at the recycling sites near Bozeman hospital, ours is a shame.
- Put motion sensing cameras to take pictured of the idiots who dump illegal items in the green boxes!
- The county commissioner let this mess happen without looking into the future - not even getting the people a choice - what a screw up!!!!
- Incineration locally is a very unattractive option because I don't believe that air pollution can be properly controlled. I don't trust the??? cost to use city facilities long term e; when oil price rises significantly in the future Why can the city achieve such a lower disposal cost/ton when apparently employing much the same technique? (Hauling to a remote landfill site)Reading the technical memorandum, it is not obvious why this is so.

- Drop off sites should contain all the options for disposal (green box-household Roll-offs, construction waste, recycling area) even if this means fewer manned sites..
- If you could take in outside waste.
- I feel if the county and city would work together the resulting refuse charges would be less for everyone.
- Would like to see additional recycling facilities. Expand Emigrant to include glass and cardboard.
- My agreement with the owner of 9th Str Island trailer park, I would receive a card or use of a bin at the trailer park. Now I pay thru taxes that he agreed to and he get refunded.
- Why was the old incinerator not kept in place and updated with federal funds??
- Don't like landfills - would like to incinerate. Could collect from NPS...possible to make a profit!
- green boxes in Clyde Park need to be moved to a less visible location. Maybe Clyde Park & Wilsall could share a green box site.
- Set all recycling bins at each greenbox sit. Frequent pick - make it convenient and we will do it!
- Why was the old incinerator not updated? Will a new one face the same fate?
- Been there done that!! It costs too much!!
- I'd like to see cardboard recycle return to Chico and Emigrant store and local bars and restaurants produce a fair amount of cardboard.
- use your discretion. a new incinerator would depend on the cost and increases in cost
- Our problem is that we have no site to dispose of our solid waste and never had. Our cabin site is on the Boulder River 30 miles from nearest disposal - but we pay taxes!!
- live on boulder. already pay 400.00 per year for Allied waste. Park County does not provide service. Would like to be exempt from refuse tax
- Possibly could costs be lowered by becoming a trash destination for Bozeman? Facilities should be combined and staff reduced.
- county is in the black and city is in the red and should get out of the trash business and stick to the streets where they belong
- There are no longer glass recycling bins at Emigrant.
- I am a single household and a senior citizen, aside from a small amount of household garbage and bags of weeds in the summer I am not a big user of the green boxes..
- Recycling should be the norm. metal, glass, cardboard, paper
- The old incinerator should never have been shut down. It should have been updated. Why would I support/trust a bond issue to a group who has been mismanaging waste for years.
- yes, Am concerned about turning money over to city. Figures are probably artificially low and not trust worthy. buy city transfer station and operate out of there. The city is out from under their white elephant that is ruining their financial situation
- follow example of Maine - households must separate waste in separate containers. This would require participating democracy & true patriotism
- \$185 a year now is 2x too much.
- Prefer maximum recycling and raise taxes as necessary to do it.
- A costly shame that the former incinerator was not updated and still in use.
- no, would not support building another one. Our problem is the cost. far too many commissioners. That's where all of the money is going.
- Fly trash and birds due to upkeep of facility.
- should have kept current incinerator updated! Very poor government!! Make contractors purchase a dump permit to use green boxes!
- If you change too much & make it too difficult people will illegally dump anywhere

they please.

- age creates physical problems in disposal of garbage by hand to dump stations
- I want recycling boxes at Deep Creek
- Need to educate on not producing so much waste. In schools, workplaces and media.
- Keep green box open 24 hours-would reduce waste from being disposed on private property or county roads.
- I would like to see an incinerator built to provide energy for Livingston, even though it costs more up front. Using diesel to haul garbage to landfills is not profitable because I don't want to depend on Arab oil.
- Why did you tear down the old incinerator? A person should not have to pay trash taxes for an unmanned cabin in Park County.
- leave it like it is
- I don't think our taxes should increase with an incinerator if we take waste and charge them from other counties. A well managed incinerator can produce a good income for our county.
- No- I use the green box 3 miles away and the recycling 6 miles away.
- This appliance from situation is problematic. It currently forces people to roll their old dead appliances off in the ditch somewhere.
- need green boxes close to the gallatin and park county line
- Tell me why this was mailed out after the public meeting? Sounds like you all already have your mind make up!
- Yes, we need a green box site in the whispering pines area.
- transfer station at Dry Creek would be good
- I would like recycling to be expanded upon for the types of recycling, such as including glass. I would also like to see recycling collection in the solid collection sites.
- Okay as is!
- What about EPA regulations concerning air particle costs? Folks need to take time to separate the recyclables and put them in the appropriate bins.
- Make it easy for people to dispose of their garbage and it will be done right. Build an incinerator to handle medical waste and it could be a money maker.
- stickers are very wasteful in money and man hours, very unnecessary
- need glass & cardboard recycle at emigrant
- Incinerator - because we had one and you shut it down.
- More recycling should occur. I see lots of cardboard, etc. in the green boxes. However, I am never alone when I take recycling to the city transfer station site on Saturdays. This appears to be a great success for Livingston.
- I think that an incineration operation would be the most practical
- frustrated when I see others not following the rules
- do not take away the remaining green boxes!
- hours & hours for recycling
- try fixing the roads first...put power lines under ground
- do the cheapest long term method
- decrease amount of clerks in the clerk of court office
- some dont bag their garbage, thank you for all you have done
- need more information
- should have done repairs to the original incinerator. do we pay again for your mistakes
- why didn't you update when you could, stupid, tax the people and hire more people
- why no boxes up cokedale? we drive 20 miles to the closest boxes
- make more recycling more convenient
- in the long run incinerator would save money
- green boxes closer to springdale

- green box attendants are a waste of money
- asinine, county spends more than city, what is the explanation for this
- something to do with solvents, gas, poisons, batteries, etc
- you don't do anything for our area why charge us
- RECYCLE, junk vehicles, remove from private property 1 time a year
- ENCOURAGE RECYCLING
- green boxes are not being used for what they are meant for HOUSEHOLD GARBAGE

- recycling should be available at green boxes
- too much gov. spending, lets live within our means
- recycle glass at green boxes
- glass recycling containers should be provided
- incinerator is best for the long term. waste disposal costs will continue to rise
- cook city should be open 9-6 monday - friday
- While recycling may not be entirely cost effective, I would still like to see it encouraged and become easier to do. We are teaching our kids that it is the environmentally friendly and ethical thing to do, but we are not practicing what we preach. It is unfortunate that tax dollars are being spent to satisfy a somewhat radical group calling themselves "concerned citizens." We are all "concerned citizens." I am sorry to see that some are confusing "concerned" with "power hungry." I trust our commissioners to research, make informed decisions, and communicate with constituents. Lawsuits are not cost effective or community minded ways to work together.

- This county is already double taxing us on solid waste, one for trash and another for a landfill that I can't hardly take anything to because its "blowable". City residents pay less for trash in a year then a county resident, and the city hauls their trash for them. why not try to save some tax payer dollars for once!
- I pay to have my recycle picked up. I think more incentives to recycle would help. true recycling, not half assed.
- CO-OP WITH CITY, 1 INCINERATOR FOR ALL
- ALL LANDFILLS SHOULD BE CLOSED. WHAT CAN'T BE BURNED SHOULD BE RECYCLED
- DON'T BURN DON'T TRANSFER
- DON'T BURN DON'T TRANSFER
- BOX SITES SHOULD NEVER BE LOCKED LET HAGERMAN DO IT. WE DON'T NEED HER FOR ADVICE ON FIRE PROTECTION
- burn more of our refuse
- burnable objects should not be taken to the landfill
- the most cost effective
- if we would have repaired old incinerator we wouldn't have this problem seem we have a bunch of air heads running the county
- compactor in gardiner
- a compactor in gardiner
- build a compactor on the gardiner sight
- better controlled and supervised
- my biggest concern is the environment
- boxes need tops to stop the garbage from blowing and the ravens from eating out of them
- provide more details
- what ever happened to the in door facility for gardiner
- if you incinerate use the heat for power generation
- seems to me incineration with power generation is a no brainer
- have no opinion, I live in Laurel and take my trash back with me.

- I dont feel that I have enough information to form an opinion on current problems
- HOW CAN THE CITY OPERATE IT TRASH SO MUCH CHEAPER THAN COUNTY
- SHOULD HAVE UPGRADED ORIG. INCINERATOR
- EXISTING SYSTEMS WORK
- MORE COST EFFECTIVE TO HIRE PEOPLE TO SORT GARBAGE AT THE BOXES
- COST EFFECTIVE TO GO WITH THE CITY
- PROMOTE MORE RECYCLING
- would like glass recycle brought back to clyde park
- I disagree with sending solid waste out of county
- we receive no services
- I think city and county need to work together and not waste money
- need to control contractors dumping
- landfill is fine. it is well maintained by the crews
- this city/county needs 1 disposal system not 2
- incineration is a long term solution.
- people from sweet grass county use dumpsters at springdale
- We need the incinerator
- I don't know enough about this to make an educated opinion
- too many scavengers, human and otherwise
- no more taxes
- my taxes are mighty high right now
- more options for drop off recycling
- feel we should be privatized
- need to recycle more
- there are no boxes on hwy10 between city and gallatin cnty. inconvenient
- was told by person at transfer station take waste to logan. let them deal with our problem
- landfill should not be used for anything that will not break down. don't repeat previous mistakes
- i do not have enough information to adequately answer 7 and 8
- I support a garbage building (similar to the one in Cooke City) in Gardiner at the same location as the green boxes.
- Please put a recycling bin at Deep or Pine Creek.
- officials need to know how to manage their money in stead of always wanting more
- since unmanned sights, unregulated the sights have been cleanest and most harmonist ever
- never open
- we would like more recycle in cooke city
- I like long hours at boxes, close after dark
- until I am assured we can sell the steam or perhaps the electricity, I think we should pursue other alternatives
- removal of swingley route boxes has impacted us greatly
- unsightly green boxes, blowing materials
- incinerator should be able to handle medical waste
- Build incinerator at existing land fill. Acquire contracts from Yellowstone Park, Big Timber, White Sulphur, and others to help offset costs. Provide additional employment for local workers. Obtain exact costs for the structure and operating expenses. Submit total to voters for approval.
- should have recycle plan that picks up at all in town addresses and at green boxes
- reduce costs, reduce # of green boxes, manned compactor on sites
- I like compactor idea in cook city for the Gardiner area

- don't want more taxes, live on fixed income
- incineration seems to be the best solution for the long term
- wish we had somewhere to recycle glass
- no garbage police keep open 24/7, full drive up and into boxes
- need recycling at the green boxes
- need recycling at the green boxes
- private contract, build operate facility using refuse fuel where disposal would cost
- no hazard waste program, need place to separate out at the boxes.
- cook city disposal building is an asset, however we need more recycling

capability

- recycle more
- tax cost mainly, I use city transfer station, need the recycle keep it
- incinerator, environmentally friendly
- how about Corwin Spring, no play ground cops, why is our garbage locked up

when bears sleep

- enforce recycling more, keep waste down, great we crush glass
- APPRECIATE LINKING CITY & COUNTY FOR THE BENEFIT OF ALL, THANKS

FOR INFORMATIVE MEETING

- WHY DIDN'T WE KEEP OUR OLD ONE
- RECEIVED LETTER AFTER MEETING DATE.
- SHOULD WE HAVE UPGRADED THE OLD INCINERATER
- I WISH WE COULD RECYCLE CARDBOARD AND GLASS AS WELL AS

PAPER & PLASTIC

- alot of tax payers use boxes, all who use should pay
- what do we do with dead calves
- no services on the boulder, I should not be charged for the service
- 2 boxes for metal, needs no sorting, manning the site is too expensive
- no recycle bins available, why is county bullied into this ridiculous incinerator

issue dead matter

- lack of clear explanation & direction on what can be disposed where? at what

cost

- i am not informed enough to make a decision; recycle bins at green boxes
- better education for county residents, more places of collection
- fine sloppy people who dump on the ground
- keep the walk in gates at green boxes if going to limit drive in hours, expand

recycling include glass

- the cost per drop off, per household, per year clean up on roadside
- I would not like to have an incinerator built. I think the possibility of a compost

facility (like the one at West Yellowstone) should be explored. There should be more bins for recycling as well. With the alternatives listed in this survey, the City of Livingston Transfer Station is the best option.

➤ Public information and education, both at green box sites and through direct mail and media, should be tried to teach us the dollar savings we would achieve if we (residents) sorted our refuse. The cost of opening, closing, monitoring and probably STILL sorting refuse at the green boxes should be considered versus an education campaign.

- Recycling should be promoted more than it is currently.
- Why don't we have a roll off box for landfill type waste at all sites?
- Recycle everything at Emigrant
- Improve recycling options with more sites and containers. Often are overflowing.
- 1) I use the Neads green boxes. This was omitted from the survey options
- the costs, I can't believe the county is actually considering any option

other than 'City of Livingston' for Q7 disposal.

- leave our site open the way it is
- can't the current incinerator be re-used

- BLOWING GARBAGE AT LANDFILL
- NEED MORE RECYCLE PLACES CINNABAR, GARDINER, CUT BACK ON LANDFILL SPACE
- I ONLY VOTE NO BECAUSE WE HAD ONE AND YOU RAN IT INTO THE DIRT
- AS LONG AS IT IS DONE Efficiently
- I WOULD SUPPORT INCINERATION OF TAXES DON'T GO OVER \$100.00
- NO
- DO WHAT EVER IS BEST FOR ENVIRONMENT CLEAN WATER
- USE CITY TRANS STA. LANDFILL TOO PICKY WHY EMP. SEPERATING GARBAGE, WASTE OF MAN POWER
- CHARGE CITY LIKE IT USED TO BE
- I LIKE THE WAY IT IS NOW
- LONG TERM CONTAMINATION OFF AQUIFERS AND STREAMS FROM LANDFILLS
- NO
- NO
- PROBLEM W/ INCENERATOR WAS COMM. CHOSE NOT TO KEEP IT UP
- COLORED CODED GREEN BOXES FOR YARD TRASH, CARDBOARD ETC.
- HOW YOU CHARGE HOME BASED BUSINESS
- I LIVE IN ED'ANNES TRLR CRT. MR VIERS PU OUR TRASH ONCE A WEEK
- COUNTY TRANSFER NEEDS TO BE OPEN M-S. WED. CLOSURE IS NOT HELPFUL
- NEED ATTENDENT AT FOREST SERVICE SAT & SUNDAY, NEED NEW INCINERATOR, I SUPPORT
- NONE, CURRENT SYSTEM WORKS WELL
- Bears, ravens, and other wildlife getting into the fenced in green box area is my concern. Having enclosed facilities or enclosed dumpsters to keep the wildlife out is a necessity in my opinion. In #7 above, I do not have enough information to make an informed decision. Choosing what is best for the environment is my choice.
- I support an enclosed compaction facility in Gardiner to replace the green box. My most frequently used green box was not listed - Corwin Springs.
- People are way too paranoid about the environment. What was so harmful about burning our own garbage!
- Why don't we have a trash fee for all of the tourists who go through Park County every year instead of having residents pay for ALL of the annual refuse? If costs keep going up, Park County will look like some places in the eastern part of the nation where people simply dump wherever they can get away with it. Annual visitors to Park County are good but residents shouldn't have to carry the full burden since we have no sales tax in place.
- I have read the online Technical Memorandum document. I see NO clearly stated justification stated in the document for building a new landfill or for building a new incinerator. We have two seemingly viable options that are both cheaper than building new facilities. Unless there are other compelling reasons not stated in this document and/or the correspondence between PCCC and the county, why would we consider potentially doubling our costs by building new facilities? It certainly appears from the information presented that we should give strong consideration to the "City of Livingston Transfer Station" option or simply stay with the existing system for the county and make some needed operational changes at the Green Boxes. If there was a clearly marked and easy to use system for sorting refuse at the green boxes we would always comply with proper sorting. I do my best now but sometimes there are items that don't fit in a bag but are not supposed to go into the large roll-off box. That is

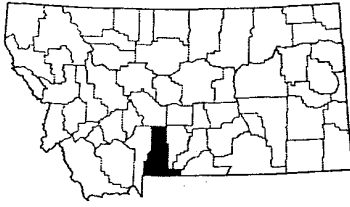
just a reality about trash sometimes. Recycling. I would sort my trash for recycling IF and only IF there is a reasonable system provided for it at the Green Boxes. I will not poke each of my bottles and cans through a little hole in a recycling bin. Additionally a recycling collection system should not cost the residents of the county more money. It doesn't make sense to recycle if we get punished both in inconvenience and in cost. I also would love to have an option to deposit materials like paint, antifreeze, oil, etc at the Green Boxes. If you provide a reasonable mechanism for disposal of such items we will use it, which should greatly reduce the practice of people hiding these items in their bagged trash or simply chucking them into the dumpsters. I don't know if it is accurate or not but my perception from your survey questions is that the green boxes are going to be moving to being open at restricted times and will be manned/monitored any time they are open; if this is true it seems that these kind of services would be feasible at a reasonable operational cost.

- County was stupid to get rid of the old incinerator-stupid stupid!!!!
- If possible it would be great to have another drop location for recycle either in town or at the green box locations. It is difficult to recycle when the nearest recycle location (transfer station) is far from our normal trash location (Deep Creek).
- **WHATEVER METHOD IS USED, IT SHOULD HAVE THE LEAST ENVIRONMENTAL IMPACT. MORE RECYCLING LOCATIONS OR CITY PICK UP COULD LOWER THE LANDFILL AMOUNTS.**
- I think the fees per family should reflect the amount of garbage each family produces. A flat rate does not motivate people to reduce their amounts.
- I would possibly support the Incineration Facility Bond if I could hear any great benefits compared to the current program.
- We do not need any added costs at this time. Lets wait a year or even two before raising taxes.
- Continue all recycling options and consider the health and environmental impacts of each collection and disposal option as a best value trade-off.
- I feel it would be helpful if you posted, at each of the green box sites, a phone number to report illegal dumping.
- An incinerator is not the answer. Who figured it would only raise our taxes \$59-\$180 per year? How can this be when the projection costs are anywhere from \$8.5 million - 18.5 million? On top of that we would have the operation costs added to our taxes of between \$145 - \$267 per ton. The Concerned Citizens need to find something else to do, maybe work on a beautification project for the county?
- let us try to separate our own refuse -- just show us which bins get which stuff...simple as recycling.

- The county should implement the most cost effective option, which is to contract to dispose of all garbage at the City of Livingston transfer station. The number of green box sites should be reduced, and the landfill capped and closed. The current system is inefficient and too costly. Subsequent cost savings should be passed on to county tax payers.

Appendix C

Neighboring County Memo



Park County Environmental Health

414 E. Callender

Livingston, MT 59047

406-222-4145 Fax 406-222-4109

October 20, 2011

Gallatin County

Spoke with Martin Bey, District Manager

- He has recently been contacted by a facility that is being built in Clark County Idaho to bring their trash to ID for incineration. They are building a pyrolysis unit.
- He has experience with incineration units when he worked in Florida. He felt our rates would go way up if we wanted an incinerator unit. He suggested we contact Clark County, ID and look into hauling our waste to their facility.
- Current tipping fee at the Logan Landfill for municipal solid waste: \$27/ton
- He state Gallatin County has enough capacity in the Logan Landfill for many years to come, so they would probably not be interested in bring MSW to an incinerator in Park County.
- Gallatin County might be interested in bringing tires to an incinerator unit in Park County.
- Bey also stated Gallatin County might be interested in pursuing certification to dispose of ash from an incinerator unit.
- He was interested in Park County bringing MSW to the Logan landfill.

Sweet Grass County

Spoke with Gail McPherson, city clerk

- County residents self-haul to the city's transfer station or contract with Allied Waste (the city's hauler) to collect MSW.
- Current tipping fee: \$18/Ton
- Approx. 2400 tons/year
- McPherson stated the Town Council would have to consider costs before they could make a decision to bring their trash to an incineration unit in Park County. She felt there would be less transportation costs coming to Park County. Currently MSW is hauled to Billings.

Yellowstone National Park

- Steve Iost says YNP may possibly be interested in bringing Park County their solid waste if an incineration unit was built.
- Holly Long says: \$166 Cost/ton currently
- Tonnage/yr = 2300 tons
- Currently they haul waste to West Yellowstone's compost facility.

- Class III and IV wastes (wood, constructions waste, carpet, etc) are handled separately.

Meagher County

- Approximately 900 tons/year
- No answer about whether they would be interested in hauling to Park County or what they currently pay to dispose currently.

Appendix D

Solid Waste Rate Schedules for Park, Gallatin, Broadwater and Stillwater Counties

PARK COUNTY REFUSE FEE POLICY

2009

SCHEDULE OF CHARGES

This schedule of annual fees reflects variation in type and volume of refuse contribution. These charges are based on a County-wide fee levy to provide operating funds for the collection and disposal of refuse at the Park County Sanitary Landfill and transfer station, and tipping fee. Residential rates are based on an average of refuse produced by households in Park County. The average residential unit will produce one ton of refuse per year. Business rates are based on the amount of refuse produced as compared with a typical residential unit. Any requested adjustments to these fees must be made to the Park County Refuse Board. One unit equals one ton of household garbage and one ton of refuse at the Park County Landfill.

1. Any house taxed as a living or residential home will pay \$185.00 (1 unit).
2. Any business will pay a minimum of \$555.00 (3 units).
3. A building serving as both a business and a residential home will be charged a minimum of \$740.00 (4 units).
4. A Bar and Café in the same building will be charged a minimum of \$1,100.00 (6 units).
5. Cabins and/or summer homes will be charged a rate of \$185.00 (1 unit).
6. Motels and Hotels will be charged \$185.00 (1 unit) for every five units or rooms.
7. Fishing Accesses will be charged \$92.50 (½ unit).
8. Schools will be charged \$185.00 (1 unit) for every 50 students. Smaller schools will be charged \$92.50 (½ unit) for 5 to 49 students.
9. Church parsonages will be charged \$185.00 (1 unit).
10. Home Businesses will be charged the same as a single dwelling \$185.00 (1 unit) unless they generate 20 percent more refuse than a single dwelling.
11. All other businesses that generate large amounts of garbage such as department stores or grocery stores will be charged a fee based on the comparison of volume and type of waste produced. Fees will be set either by negotiation or by monitoring by the district.
12. Bed and Breakfasts are to be considered a "Home Business" with a charge of two units, unless decided otherwise on an individual basis.
13. Mini-Storage Warehouses will be charged one unit per location.
14. The Park County Solid Waste Board has a contract with the Church Universal and Triumphant to bill it by the calendar year for 233 households with the reservation that the Board may increase the number of units if tonnage goes over the amount for 233 households. Therefore, this bill (#7200999) cannot generally be run until January 1 of the following year.

Rural Refuse

15. Charges for rural garbage maintain the transfer station, landfill, and green boxes and collections from green box drop-off points.
16. Charges are for the calendar year and payable on first-half taxes.
17. By mutual agreement between the board and the assessor's office, July 1 is the cut-off date for billing mobile homes and new residences in the county. Any mobile homes arriving in Park County after July 1 of the current year will not be billed for rural garbage until the following year.
18. If a residence is deemed "Livable" it will be charged with a rural garbage charge whether occupied or not. The service is available all year to all units regardless of occupancy.
19. It is the Solid Waste Board's policy to refund only for the most current year's tax.
20. Any adjustment or refund requests by a taxpayer must be made to the Park County Solid Waste Board. Adjustments will not be made by the assessor's office unless it was an office error and can be proven by examination of Assessor/Appraisal records. Such adjustments will only be made for assessments not yet billed. Any billing already done must go through the Refuse Board, which means it needs to be paid and a refund allied for with the board.
21. The Park County Solid Waste Board has the right to levy the charge on all property within the district. They choose to levy only on a livable residence and on businesses within the district.
22. The Park County Solid Waste Board has the right to adjust the charge from the base rate to a higher rate if a household is generating more than the average amount of household refuse.

What is E-Waste?

Electronic waste, or e-waste, is loosely applied to consumer and business electronic equipment that is near or at the end of its useful life. The amount of old electronics that are discarded every year is rapidly increasing. With lower prices and rapidly changing technology, computers, phones and TVs now have very short life spans.

Is "E-Waste" clearly defined?

There is no clear definition for e-waste; for instance whether or not items like microwave ovens and other similar appliances should be grouped into the category has not been established. A large variety of electronic equipment such as floppy drives, fans, PC boards, power supplies, telecom, adapters, cellular phones, hard drives, and monitors, etc. are defined as e-waste.

Is "E-Waste" considered hazardous?

Certain components of electronic products may contain hazardous materials such as lead, mercury, and cadmium, depending on their condition and density.

Why Recycle Electronics?

Electronics contain valuable metals and components that can be used again in another manufacturing process.

Cadmium, hexavalent chromium, mercury, chromium, barium, beryllium and brominated flame-retardant materials are components that can pollute water and air resources without proper disposal or recycling.

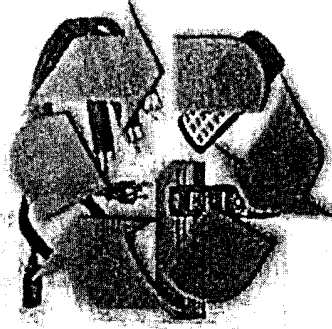
One of the fastest growing [hazardous] waste streams is e-waste such as computers, television sets and mobile cell phones.

Electronic waste is a direct consequence of our ongoing desire to communicate from anywhere, connect more often and compute from home, office or on the road. Add an increasing demand for electronic gaming, higher definition televisions or smart cars and the result is a catastrophic accumulation of e-waste, now and into the future. An ongoing effort to address this exponentially growing problem is essential.



GALLATIN
SOLID WASTE
MANAGEMENT DISTRICT

E-Waste (Electronic Waste)



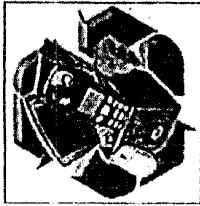
Phone: 406-582-2493

Fax: 406-582-2491

Mailing Address

PO Box 461

Three Forks, MT 59752



The Gallatin Solid Waste Management District accepts e-waste from Households or Commercial enterprises year-round at the Logan Landfill the fee is \$27 per Ton, with a minimum of \$5.00. For more information please call:

582-2493

E-Waste Accepted

- Computer Towers
- Laptops
- Monitors
- Printers
- TV's
- Stereo Equipment
- VCRs
- Copiers
- Keyboards
- Mice
- Rechargeable Batteries
- Cell Phones
- Handheld Electronics

Items Not Accepted

- Big Projection TVs
- Microwaves
- Refrigerators
- Kitchen or Bathroom Appliances
- Large Commercial Copiers

Other Locations to Drop off

E-Waste

Computers and Accessories

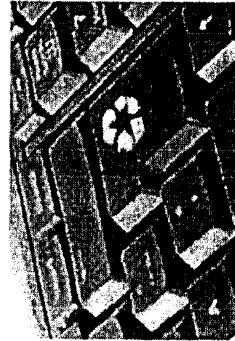
- Electronics Recycling of Montana
- Staples
- Office Depot

Cell Phones

- Longfellow Elementary
- City of Bozeman
- Simply Sellular
- Staples
- Cellular Plus
- Bozeman Convenience Site
- Logan Landfill

Rechargeable Batteries

- Batteries Plus
- Battery Solutions
- Belgrade True Value
- Gallatin Wireless
- Home Depot
- J&S Electronics
- Kenyon Noble
- Radio Shack
- Lowe's



E-Waste Processor

E-Waste is recycled through UNICOR. UNICOR's goal is to be a responsible steward of the environment by ensuring their recycling operations meet all national standards.

UNICOR's unique, full service recycling program is an integrated part of a national e-scrap solution. UNICOR's commitment to the environment extends to its vendors, who are required to sign no-landfill certifications, follow a restrictive export policy, and agree to site inspections.

With nationwide locations and approximately 950 highly trained workers, UNICOR offers exceptional value and competitive pricing. UNICOR provides recycling activities to federal, state, and local governments, schools, non-profit organizations and private industry while protecting the environment.

Through ISO Certification processes, UNICOR's operational procedures comply with all laws and regulations, demonstrate commitment to pollution prevention, are environmentally sound and conserve resources.

<http://www.unicor.gov/recycling/>



'We're life changing.'

CLASS WASTE SITE

In order to conserve space at the landfill site, separate areas have been designated for:

- Concrete
- Non treated wood products
- Tires, Stumps, and Limbs
- Auto Parts

Contaminated soils must have prior approval from management.

**WHENEVER CONVENIENT
HAVING THESE PRODUCTS SEPARATED
WILL HELP OPTIMIZE USE OF THE AVAILABLE
LANDFILL SPACE**

MATERIALS THAT REQUIRE SPECIAL HANDLING

Please tell the scale attendant what is in your load at weigh in.

Paint:

We accept latex paint containers. All contents must be dried up. To facilitate this use kitty litter sawdust or sand. Make sure all liquids are absorbed.

Oil based paints should be taken to the Household Hazardous Waste Event at the Bozeman Convention Site on the 2nd Saturday of each month. Between 9:00 & noon.

Contaminated Soils

Must have prior approval from management.

Asbestos:

Non friable asbestos
Must have prior approval from management.
WE DO NOT ACCEPT FRIABLE ASBESTOS.
See our website for waste tracking forms.

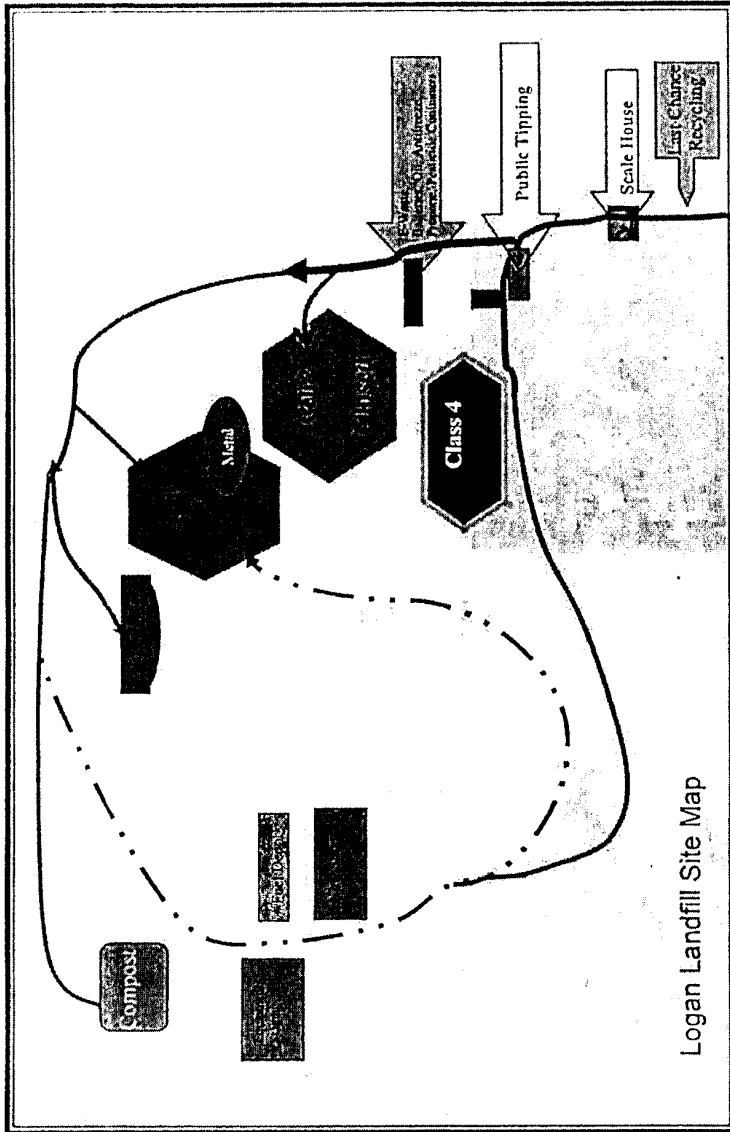
We accept:

Batteries; Fluorescent bulbs; Propane tanks & cylinders; Pesticide containers; Bear spray
Oil and Antifreeze.

Bring liquids in non returnable containers. These items are charged as part of your regular load. We have a designated drop off location for each to be recycled.

Trailer Houses, Mobile Units or Structures:

Please call 406-582-2494 OR 406-582-2495 for disposal process and fees.



Logan Landfill Site Map



Mission Statement

The purpose of the Gallatin Solid Waste Management District is: to provide constituents with cost efficient solid waste services; to provide for the balanced consideration and representation of the diverse views and issues regarding solid waste management; to advocate for the health, safety and welfare of the residents; to manage the processing, reclaiming, storing, transporting, or disposing of waste in ways that protect the ecology of lands in the District; to identify goals, policies and procedures that will aid local jurisdictions in meeting solid waste reduction and recycling goals.

Gallatin Solid Waste Management District Board Of Directors:

City of Manhattan	(406) 579-5198
Clark Johnson	
Member At Large	(406) 584-0028
Dan Klemann	
Member At Large	(406) 539-9542
Phillipson	
City of Three Forks	(406) 580-2930
Dave Hanson	
Commission Representative	(406) 582-3000
Steve White	
City of Belgrade	(406) 581-3000
Kevin Moriarty	
City of Bozeman	(406) 582-2515
Dabbie Arkell	

Fee Schedule for Logan Landfill

Updated March 21, 2012

PLEASE NOTE:

WE ACCEPT CASH OR LOCAL CHECKS ONLY

NO OUT OF STATE CHECKS

NO CREDIT OR DEBIT CARDS

Charge accounts can be set-up by an application/approval process.

Regular Municipal Solid Waste (Kitchen waste, furniture, yard clippings, etc.)	\$27.00/ton
Light Construction Materials (2x4s, drywall, plywood, sawdust, insulation, carpet, etc.)	\$48.00/ton
Heavy Construction Materials (Steel beams, timber beams, concrete, etc.)	\$58.00/ton
Minimum \$5.00 fee	

TIRES

Automobile or Light Truck

Whole	\$5.00 ea.
Cut in half	\$3.00ea.
Quartered	

Regular Waste

Whole Tractor, Truck or Trailer

	\$10.00 ea.
Whole Heavy Equipment	\$25.00 ea.

Maximum of 10 tires disposed of at one time

E-Waste:

Residential	\$27.00/ton
Commercial	\$48.00/ton
Minimum \$5.00 fee	

White Goods (water heaters, dishwashers, bicycles, refrigerators, freezers, ranges, washers, dryers, lawnmowers, etc.)	\$2.00 ea.
Refrigerant Removal	\$30.00 ea.

Appliances **MUST BE EMPTY** and have the doors removed.

Deceased Animals:

Small (250 lbs. & under)	\$15.00/head
Large (over 250 lbs.)	\$30.00/head

METAL & WIRE

Should be diverted to the scrap metal pile for recycling. If possible separate the metal and wire beforehand so it can be unloaded at the designated recycling areas.

Clean Wood Waste Collection Program

Diverting clean wood waste will save space in the landfill lined cell.

Clean Wood Waste consists of:

Branches, limbs, pruning's, stumps, natural unpreserved lumber, wood waste, and pallets.

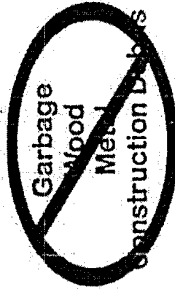
Wood should be free of contaminants that would damage wood waste processing equipment such as dirt, rock, concrete, plastic, metal.

Unacceptable materials for this area are:

Painted, preserved, waterproofed or stained woods, pressboard, plywood, OSB, particle board, gypsum waste, laminates, formica, furniture, soil, rocks, sod, food waste, pet waste, creosote or chemically treated wood.

Compost

Grass, Leaves, Straw, Manure, Hay,
Sawdust, Woodchips,
Branches up to 1/4 inch.



Late Fee

The site will promptly close at 4:30 p.m. Late customers will be turned away. Any customer unloading after the closure time will be charged a late fee.

The late fee is incremented in 10 minute intervals after 4:30 and will be charged at \$25.00 for each interval.

Up to \$100. may be added to the tipping fee.

Unsecured Load Fee

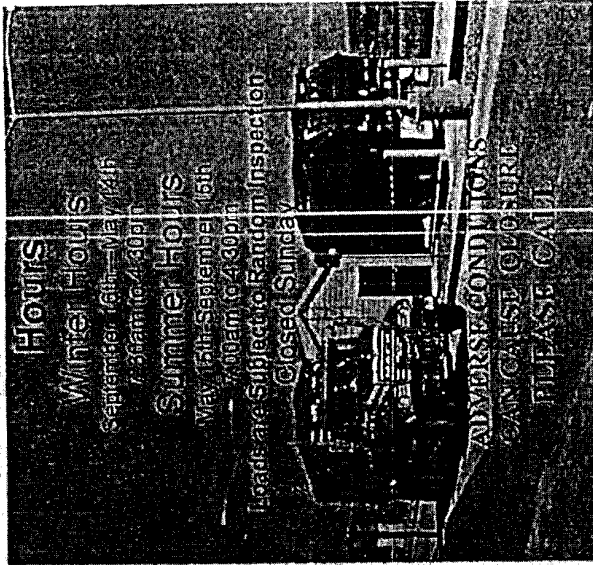
The additional fee will be \$25.00 added to the waste deposit charge for the first offense increased by an additional \$25.00 for each subsequent offense

Help keep our highways safe and clean



**GALLATIN
SOLID WASTE
MANAGEMENT DISTRICT**

Major Class II Landfill Logan, Montana



District Manager: Martin Bey
Office Manager: Dawn Chretien

<http://www.gallatin.mt.gov/Landfill>

Phone: 406.284.4029
Fax: 406.582.2491
Main Address
PO Box 111

Three Forks, MT 59752
Located off I-90 Exit 283

FEE SCHEDULE FOR LOGAN LANDFILL.

Updated March 21, 2012

Regular Municipal Solid Waste.....	\$27.00/ton
(kitchen waste, furniture, yard clippings, etc.)	
Light Construction Materials.....	\$48.00/ton
(2x4s, drywall, plywood, sawdust, insulation, carpet, etc.)	
Heavy Construction Materials & Special Wastes.....	\$58.00/ton
(steel beams, timber beams, concrete, etc.)	
Unsecured Load Fee.....	\$25 First, \$50 Second, \$75 Third
Late Disposal Fee Charge.....	See Late Fee Policy attached

*The operator at the landfill may assess additional charges for loads carrying the items listed below.

This list applies to all landfill users

Automobile or Light Truck Tire

Whole.....	\$5.00/each
Cut in half.....	\$3.00/each
Quartered.....	Regular Waste
Whole Tractor, Trailer, or Truck.....	\$10.00/each
Whole Heavy Equipment.....	\$25.00/each

Maximum of 10 tires disposed of at one time

E-Waste:

Residential	\$27.00/ton
Commercial	\$48.00/ton

Small White Goods.....	\$2.00/each
(water heaters, dishwashers, bicycles, refrigerators, freezers, ranges, washers, dryers, lawnmowers, etc.)	
Large Appliances.....	\$5.00 to \$25.00/each
Appliances Needing Refrigerant Removed.....	\$30.00 additional charge

All appliances must have the doors removed and MUST BE EMPTY

Deceased Animals

Small (250 lbs. & under).....	\$15.00/head
Large (over 250 lbs.).....	\$30.00/head

We accept propane tanks and cylinders, fluorescent bulbs, pesticide containers, bear spray, batteries (car, truck, marine, etc.); oil and antifreeze (Inform scale attendant at weigh in, bring in non returnable containers). They are charged as part of your regular load. We have a designated drop off location for these to be unloaded and recycled.

All metal and wire will be diverted to the scrap metal pile for recycling. Please make every attempt to separate the metal and wire beforehand so it can be easily unloaded at the designated metal recycling area.

We accept clean wood waste such as branches, limbs, natural wood, woody pruning, stumps, trunks, and other woody vegetation. There is a designated drop off area. Clean wood waste is unpainted and unpreserved lumber and wood waste, particleboard, pressboard, plywood, OSB, and pallets. The wood should be free of contaminants such as dirt, rock, concrete, plastic, metal. Material not accepted for wood debris recycling includes: painted, preserved, waterproofed or stained wood, gypsum waste, laminates, formica, furniture, soil, rocks, sod, food waste, pet waste, creosote treated wood, or chemically contaminated wood.

Contaminated soils and non-friable asbestos must have prior approval from management.

Mobile Units/Structures: The mobile unit /structure less than 10 feet wide that can safely weigh across the scale will be charged the light construction fee of \$48.00/Ton. No units over 10 feet wide will be allowed to weigh on the scales. If a unit cannot weigh on the scale, a flat fee of \$600 will be charged. Please call 406.582.2494 to get disposal form/and disposal policy.

Please note: We can only accept cash or check for payment. *Charge accounts can be set-up by an application/approval process*****

Recycling

Your help is needed

To keep recyclable items clean and free of contamination,
**DO NOT LEAVE ANY NON-RECYCLABLE ITEMS
IT JEOPARDIZES THE RECYCLING PROGRAM**

Plastic Recyclables:

Should be emptied flattened with caps on. No plastic bags or Styrofoam.

Cardboard Recyclables:

No food contaminated such as pizza boxes or wax coated materials such as 1/2 gallon milk cartons are not accepted in these bins. All boxes should be broken down to conserve space in the bins prior to pickup. Brown bags are accepted in cardboard bins.

Paper Recyclables:

Newspaper, magazine, phone books, junk mail, office paper, wrapping paper, tissue paper and paperback books are accepted (staples ok). No neon paper or fiber that does not tear.

Glass

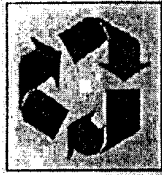
Due to current market conditions and shipping and handling cost we are currently not accepting glass.
Curbside pick-up currently offered by:

J and K Recyclers @ 582-0243

Or

RRR Recycling @ 388-9494

The city of Livingston Landfill @ 222-1142



GSWMD Collection Sites

Walmart	Bozeman
Kmart	1500 N. 7th Ave.
Balfields	1126 N. 7th Ave.
MSU	Highland @ Ellis (Across from Hospital)
MSU	S. 13th & College (Parking lot) Harrison St.
Home Depot	(Near Langford Hall) 1771 N. 19th Ave.
Bozeman	2143 Story Mill
Convenience Site	1735 W Main St
Safeway	County Sites
Belgrade	Madison @ Janet
Amsterdam	Across from Market
Gallatin Gateway	Gateway Community Center
Three Forks	150 E. Railroad Ave.
River Rock	Village Center
Big Sky	Big Sky Town Center
Manhattan	Valley Improvement Center
Logan Landfill	10585 Two Dog Road
Hebgen/West Yellowstone Refuse District	Transfer Station
West Yellowstone	





Gallatin SWMD - Can this go in the Recycling



YES



Milk jugs



Plastic Hangers



Aluminum cans



Newspaper & Inserts



Mail, magazines, mixed paper and catalogs



Plastic bottles



Metal cans



Paper bags



Cardboard



Plastic jugs & lids



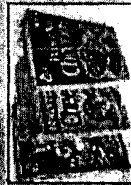
Plastic Cups



Shredded Paper



Phone books



Cereal

NO



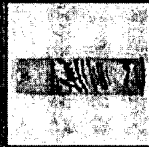
Tires



Styrofoam



Batteries



Gasoline cans



Auto parts



Pizza boxes



Light bulbs



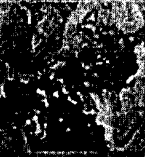
Styrofoam containers



Milk bottles



Wax coated paper milk cartons



Plastic bags



Household Waste

SOLID WASTE DISTRICT OPERATION

The Stillwater County Solid Waste District was formed 35 years ago to provide a system where residents could work together to provide solid waste disposal services. The District is managed by a Solid Waste Board whose members are appointed by the Stillwater County Commissioners. The Board meets on the second Thursday of the month with their concerns.

Each household within the county, excluding the City of Columbus, is charged \$146 annually to use the district solid waste system. For this price, all household garbage considered non-hazardous is accepted for disposal. Fees are imposed at staffed collection sites for items such as tires and construction debris.

Once collected, solid waste is transported to the City of Billings landfill. Federal regulations and suspected ground water contamination forced the closure of the Stillwater County landfill.

If you have questions or concerns about Solid Waste, please call (406) 322-5364 or contact any Solid Waste Board Member:

SOLID WASTE BOARD MEMBERS

Chairperson **Bill Linger, North Stillwater Co. Representative**
 Vice-Chairman **Bill Downs, Molt Representative**
Mike Mauland, Rapelle Representative
Harry Harsha, South Stillwater County Representative
Richard Nauman, Park City Representative
Mary Lou Hoover, Health Board Representative
Cliff Barr, South Stillwater County Representative
Maureen Deyew, Commissioner Liaison

Solid Waste Department Information can be found at www.stillwater.mt.gov

**STILLWATER COUNTY SOLID WASTE DISTRICT
COLLECTION SITES & FEES**

The Solid Waste District is Recycling at each collection site:

Columbus Site Recycles: Aluminum; Cardboard; Metal; Used Oil; Newspapers

Absarokee Site Recycles: Aluminum; Cardboard; Metal; Magazines; Newspapers

Nye Site Recycles: Aluminum; Cardboard; Metal; Used Oil; Magazines; Newspapers

Park City Site Recycles: Cardboard; Metal; Used Oil

Molt Site Recycles: Aluminum; Cardboard; Metal

Rapelle Site Recycles: Cardboard; Metal

Reed Point Site Recycles: Cardboard; Metal; Used Oil

The Solid Waste Department wants to thank all the people who are actively recycling and encourages recycling to help reduce the amount of trash going in landfills.

ROLL-OFF BOX RENTAL RATES

- 28 cubic yard Roll-off box - \$1.25 per mile (from Solid Waste Shop round trip)
- Dump Fee.....\$225.80
- Box Rental.....\$3.50 per day
- Landfill Fee.....~~\$15.00~~ per ton

18.00 per ton

HOUSEHOLD HAZARDOUS WASTES

Liquid wastes cannot be accepted at the collection sites for disposal. Paints, solvents and other liquid wastes may be air dried or solidified in sand or kitty litter and then double bagged for disposal. Household hazardous wastes as defined in MCA 75-10-203 means products commonly used in the home that due to corrosiveness, ignitibility, reactivity, toxicity or other chemical or physical properties are dangerous to human health or the environment. Household hazardous waste includes, but is not limited to cleaning, home maintenance, automotive, personal care, yard maintenance and pesticides.

The District's recycling program in Vaughn, Belt and Cascade continues to grow. We now accept paper, aluminum and newspapers as well as scrap metal at those collection sites. The sites were chosen for this trial program, but others may be added. District card holders who separate these recyclable items from their refuse will not be charged a punch, allowing for more refuse disposal. Please note, our recycling program does not include the City Recycling Center, recyclable items taken to the city's location will be accepted based on their program rules which may be different from ours.

The staffed Rural Collection Sites are open to Cascade County Solid Waste District members and special permit holders four days a week. These sites are for household waste only.

Hours of Operation:

Hardy Creek, Ulm, , Stockett, and Armington Container Sites:

Tuesday 9:00 am to 4:00 pm
 Wednesday 9:00 am to 4:00 pm
 Saturday 9:00 am to 4:00 pm
 Sunday 9:00 am to 4:00 pm

Fort Shaw Container Site

Wednesday 9:00 am to 4:00 pm
 Saturday 9:00 am to 4:00 pm
 Sunday 9:00 am to 4:00 pm

Monarch Container Site

Tuesday 9:00 am to 4:00 pm
 Sunday 9:00 am to 4:00 pm

Cascade and Vaughn Container Sites:

Tuesday 7:30 am to 4:30 pm
 Wednesday 7:30 am to 4:30 pm
 Saturday 7:30 am to 4:30 pm
 Sunday 7:30 am to 4:30 pm

Holiday Closures:

The staffed Rural Collection Sites are closed to the public on the following holidays: New Year's Day, Memorial Day, 4th of July, Labor Day, Thanksgiving, Christmas Day.

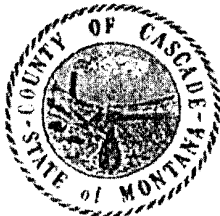
Administration:

We value your comments and concerns and will continue to work to address them. To improve our feedback system we have a dedicated e-mail ccswsuggestions@casadecountymt.gov. You can also find useful information about our program under the Departments tab on our website: www.casadecountymt.gov.

Thank you for your suggestions, comments and most importantly for your patience as we continue working to improve our rural solid waste collection system.

DO NOT ACCEPT THIS PERMIT UNLESS THE PINK LOCK & KEY ICONS FADE WHEN WARMED AND YOU CAN SEE A HEXAGON-SHAPED TRUE WATERMARK WHEN HELD TO THE LIGHT

January 1, 2012—December 31, 2012



Solid Waste Permit

0001958300 513
 EQUIPMENT COMPANY

Each Punch is worth 1/2 of a yard
 (approx. 3 garbage cans or 150 pounds)

1	2	3	4	5	6	7	8	9	10
11	12	13	14	15	16	17	18	19	20
21	22	23	24	25	26				

MONTANA WASTE SYSTEMS INC
 PO BOX 2582
 GREAT FALLS, MT 59403

No county taxes are used to fund the operations of the Cascade County Solid Waste District. The fees charged through this permit system and onsite dumping fees are required to cover all costs of the service

**ALL SITE ATTENDANTS, MAKE SURE TO PUNCH
ACCORDING TO THE FEE PUNCH SCHEDULE BELOW:**

CASCADE COUNTY TRANSFER SITE PUNCH SCHEDULE

SOLID WASTE CUBIC YARD CHART				
1-55 gallon drum = .25 cu yds	\$2.50	1	punch	
3-30 gallon cans = .5 cu yds	\$2.50	1	punch	
Pickup Small = 1.0 cu yds	\$5.00	2	punches	
Pickup Small w/2' above box = 2.0 cu yds	\$10.00	3	punches	
Pickup Full Size Short Box = 2.0 cu yds	\$10.00	3	punches	
Pickup Full Size Short Box w/2' above box = 3.5 cu yds	\$17.50	7	punches	
Pickup Full Size Long Box = 2.5 cu yds	\$12.50	4	punches	
Pickup Full Size Long Box w/2' sides = 4.0 cu yds	\$20.00	8	punches	
FLAT-BED TRUCK OR TRAILER				
8' Long X 8' Wide w/2' Sides = 4.74 cu yds	\$23.70	8	punches	
8' Long X 8' Wide w/4' Sides = 9.48 cu yds	\$47.40	15	punches	
10' Long X 8' Wide w/2' Sides = 5.9 cu yds	\$29.50	9	punches	
10' Long X 8' Wide w/4' Sides = 11.85 cu yds	\$59.25	19	punches	
16' Long X 8' Wide w/2' Sides = 9.48 cu yds	\$47.40	15	punches	
16' Long X 8' Wide w/4' Sides = 18.96 cu yds	\$94.80	30	punches	
20' Long X 8' Wide w/2' Sides = 11.85 cu yds	\$59.25	19	punches	
20' Long X 8' Wide w/4' Sides = 23.7 cu yds	\$118.50	38	punches	
OTHER				

ACCEPTABLE RECYCLABLE GOODS				
Refrigeration Units - freon free (w/proper certification)			N/C	
Refrigeration Units - w/o proper certification	\$25.00			
NO MORE THAN 2 TIRES PER LOAD				
Passenger car and light truck - each tire	\$5.00	2	punches	
Truck tire - each tire	\$10.00	3	punches	
Heavy equipment tire up to 28" - each tire	\$25.00	8	punches	

Appendix E

Bell Report Appendix A—

Explanation of Solid Waste Classes in Montana

Appendix A - Additional Relevant Background Information

Waste Groups and Types of Disposal Facilities

According to Administrative Rule of Montana 17.50.503, "Solid wastes are grouped based on physical and chemical characteristics which determine the degree of care required in handling and disposal and the potential of the wastes for causing environmental degradation or public health hazards." Solid wastes in Montana are categorized into three groups as summarized in the table below.

Table A – 1: Solid Waste Groups and Categories

Waste Group	Waste Category	Examples of Materials
Group II	Decomposable Wastes and Mixed Solid Wastes (excluding regulated hazardous wastes)	Municipal and household solid wastes such as organic materials, paper, cardboard, glass, metal, plastics. Commercial and industrial wastes such as packaging materials, liquid or solid industrial process wastes, crop residues, chemical fertilizers.
Group III	Wood Wastes and Non – Water Soluble Solids	Inert solid waste such as unpainted brick, dirt, rock, and concrete, industrial mineral wastes, untreated wood materials, and vehicle tires.
Group IV	Construction and Demolition Wastes	Construction or demolition wastes and asphalt (excluding regulated hazardous wastes).

These waste groups are disposed in the proper corresponding waste facilities according to Administrative Rule of Montana 17.50.504, as follows:

"Disposal facilities are classified according to their respective abilities to handle various types of solid waste. Systems of acceptable disposal may entail containment of waste with assured protection against leachate migration or may take advantage of natural treatment processes such as evaporation, chemical and microbiological degradation, filtration, adsorption, and attenuation. Solid waste management facilities may involve ponds, pits, lagoons, land spreading areas, impoundments, or landfills. Although facilities are broadly classified as to the solid waste groups they may accept, specific restrictions may be placed on individual disposal units or disposal areas. As an example, many Class II landfills may not be acceptable places for the disposal of Group II liquids or sludges. Such restrictions, if any are warranted, shall be specified on the solid waste management system license."

The three types of disposal facilities are summarized in the table below.

Solid Waste Management Policies and Priorities

Montana has adopted the "Reduce, Reuse, and Recycle" approach in waste management according to the State's Integrated Waste Management Plan (IWMP, Final Draft, 2006). Furthermore, it is understood Montana has established goals for decreasing and diverting the amount of solid waste that is generated statewide through source reduction, reuse, recycling, and composting measures and programs. The target waste reduction / diversion rates and timeframes are:

17 % by 2008

19 % by 2011

22 % by 2015

In particular, the IWMP asserts (page 75) "The State of Montana will regulate solid waste incineration and enforce laws to protect the public health and welfare of Montana citizens. Source reduction, reuse, composting, and recycling of materials will be encouraged as a preferred alternative to incineration of solid waste."